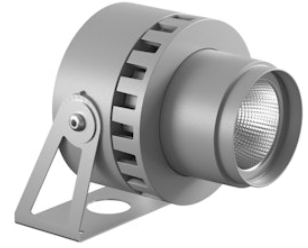


FLOS

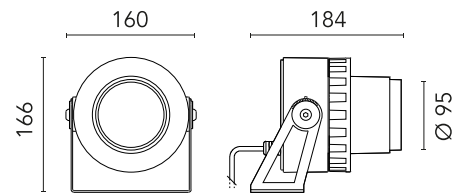
FA54102806 Grey

Spock 2 NEW

Designed by FLOS Outdoor



LED source included. Integrated electrical power supply 220-240V ON/OFF. Fixing bracket included. Equipped with a 1000 mm protruding section of neoprene cable and a kit with crimpable connectors and adhesive heat-shrinkable sleeves that guarantee the tightness of the connection. Optional IP68 connectors available. The metal nail for ground installation needs to be ordered separately. Optional accessories to regulate the light beam. Dimmable version available upon request.



Are you a professional and your project needs consulting and support?

[BOOK AN APPOINTMENT](#)

Main specifications

| | |
|-------------------|----------------------|
| EAN | 8054793692982 |
| Mounting | Ground |
| Environments | Outdoor wet location |
| LED type | LED array |
| Power (W) | 24 |
| System power (W) | 27 |
| Source flux (lm) | 3022 |
| Lumen Output (lm) | 2141 |

Physical

| | |
|--------------------------|------------|
| Colour | Grey |
| Orientation | Adjustable |
| Longitudinal tilting (°) | 270 |
| Net weight (kg) | 1.8 |
| Package height (mm) | 235 |
| Package width (mm) | 180 |
| Package length (mm) | 185 |
| Package volume (m3) | 0.01 |
| IP internal | 66 |

Download

[Mounting instructions](#) ZIP

Photometric Files

[LDT / IES](#) ZIP

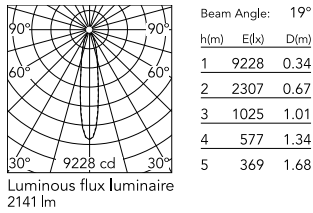
Technical Drawings

[2D](#) ZIP

[3D](#) ZIP



Schematic light drawing



Photometric

| | |
|------------------------|-----------|
| Light distribution | Symmetric |
| CCT (K) | 2700 |
| CRI> | 80 |
| Beam angle C0-180 (°) | 20 |
| Beam angle C90-270 (°) | 20 |
| Extreme cut off | No |

Electrical

| | |
|--------------------|--------------|
| Insulation class | I |
| Frequency (Hz) | 50/60 |
| Main voltage (Vac) | 220-240 |
| Power supply | Integrated |
| Power supply type | Non Dimmable |
| Emergency | No |

Ecodesign and Energy Labelling

This product contains a light source of energy efficiency class D



Notes

Please check with your referent person in our Front Office if a code modification is needed to meet the required certification compliance
Dimmable version on request

Accessories & Power Supply



OPTIONAL
Accessory

FA20930

Flood Diffuser Spock 2



OPTIONAL
Accessory

FA20630

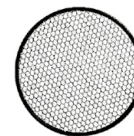
Visor Spock 2



OPTIONAL
Accessory

FA203

Kit Ground Spikes Spock 1/Spock 2/Spock 3



OPTIONAL
Accessory

FA21230

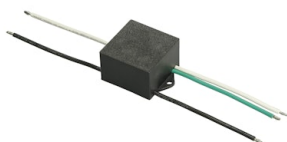
Anti-Glare Louvre Spock 2



OPTIONAL
Accessory

FA26230

Elliptical Lens Spock 2



OPTIONAL
Accessory

F990E00A000

S.P.D. (SURGE PROTECTION DEVICE)



OPTIONAL
Accessory

F990C010000

3/4 way terminal block 4 poles IP68 H2O stop. (ø5,5÷12mm cable)



OPTIONAL
Accessory

F990C00A000

2 way terminal block 4 poles IP68 H2O stop. (ø5,5÷12mm cable)