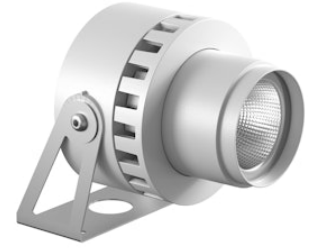


# FLOS

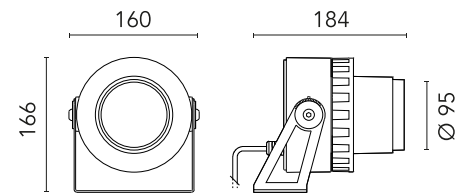
FA54100701 White

## Spock 2 NEW

Designed by FLOS Outdoor



LED source included. Integrated electrical power supply 220-240V ON/OFF. Fixing bracket included. Equipped with a 1000 mm protruding section of neoprene cable and a kit with crimpable connectors and adhesive heat-shrinkable sleeves that guarantee the tightness of the connection. Optional IP68 connectors available. The metal nail for ground installation needs to be ordered separately. Optional accessories to regulate the light beam. Dimmable version available upon request.



Are you a professional and your project needs consulting and support?

[BOOK AN APPOINTMENT](#)

### Main specifications

EAN	8054793687551
Mounting	Ground
Environments	Outdoor wet location
LED type	LED array
Power (W)	24
System power (W)	27
Source flux (lm)	3408
Lumen Output (lm)	2415

### Physical

Colour	White
Orientation	Adjustable
Longitudinal tilting (°)	270
Net weight (kg)	1.8
Package height (mm)	235
Package width (mm)	180
Package length (mm)	185
Package volume (m3)	0.01
IP internal	66

### Download

[Mounting instructions](#)  ZIP

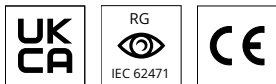
### Photometric Files

[LDT / IES](#)  ZIP

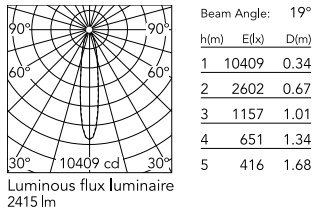
### Technical Drawings

[2D](#)  ZIP

[3D](#)  ZIP



## Schematic light drawing



## Photometric

Light distribution	Symmetric
CCT (K)	4000
CRI>	80
Beam angle C0-180 (°)	20
Beam angle C90-270 (°)	20
Extreme cut off	No

## Electrical

Insulation class	I
Frequency (Hz)	50/60
Main voltage (Vac)	220-240
Power supply	Integrated
Power supply type	Non Dimmable
Emergency	No

## Ecodesign and Energy Labelling

This product contains a light source of energy efficiency class D



## Notes

Please check with your referent person in our Front Office if a code modification is needed to meet the required certification compliance  
Dimmable version on request

## Accessories & Power Supply



OPTIONAL  
Accessory

FA20930

Flood Diffuser Spock 2



OPTIONAL  
Accessory

FA20630

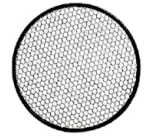
Visor Spock 2



OPTIONAL  
Accessory

FA203

Kit Ground Spikes Spock 1/Spock  
2/Spock 3



OPTIONAL  
Accessory

FA21230

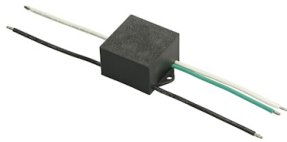
Anti-Glare Louvre Spock 2



OPTIONAL  
Accessory

FA26230

Elliptical Lens Spock 2



OPTIONAL  
Accessory

F990E00A000

S.P.D. (SURGE PROTECTION  
DEVICE)



OPTIONAL  
Accessory

F990C010000

3/4 way terminal block 4 poles  
IP68 H2O stop. (ø5,5÷12mm  
cable)



OPTIONAL  
Accessory

F990C00A000

2 way terminal block 4 poles IP68  
H2O stop. (ø5,5÷12mm cable)