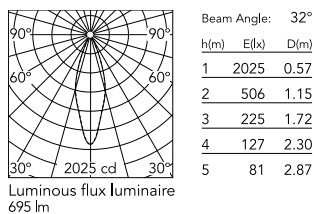


Schematic light drawing



Photometric

Light distribution	Symmetric
CCT (K)	2700
CRI>	80
Beam angle C0-180 (°)	33
Beam angle C90-270 (°)	33

Electrical

Insulation class	I
Frequency (Hz)	50/60
Main voltage (Vac)	220-240
Power supply	Integrated
Dimmable	No
Power supply type	Non Dimmable
Dimming interface	Not Dimmable
Emergency	No

Ecodesign and Energy Labelling

This product contains a light source of energy efficiency class E



Notes

5 m neoprene cable (10 m upon request) for remote connection.

Accessories & Power Supply



REQUIRED
Pole

FA24806

Pole Ø76 mm h 3500 mm(with
Base)



REQUIRED
Pole

FA25006

Pole Ø76 mm h 3500 mm (+500
mm In-ground)



REQUIRED
Pole

FA24906

Pole Ø76 mm h 4500 mm(with
Base)



REQUIRED
Pole

FA25106

Pole Ø76 mm h 4500 mm (+500
mm In-ground)



REQUIRED
Pole

FA414006

Pole Ø 102 mm h 4000 mm With
Base



REQUIRED
Pole

FA414506

Pole Ø 102 mm h 4000 mm (+500
mm In-ground)



REQUIRED
Pole

FA415006

Pole Ø 102 mm h 5000 mm With
Base



REQUIRED
Pole

FA415506

Pole Ø 102 mm h 5000 mm (+500
mm In-ground)



OPTIONAL
Accessory

F029Z020000

Converter Spine 2 Optic Medium
Flood



OPTIONAL
Accessory

F029Z021000

Converter Spine 2 Optic Flood



OPTIONAL
Accessory

F029Z022000

Converter Spine 2 Optic Wide
Flood



OPTIONAL
Accessory

F029Z023000

Converter Spine 2 Optic Elliptic 1



OPTIONAL
Accessory

F029Z024000

Converter Spine 2 Optic Elliptic 2



OPTIONAL
Accessory

F029Z025000

Converter Spine 2 Optic Wall



OPTIONAL
Accessory

F990C010000

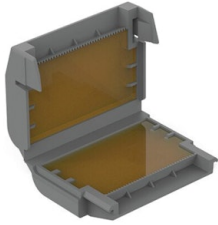
3/4 way terminal block 4 poles
IP68 H2O stop. (ø5,5÷12mm
cable)



OPTIONAL
Accessory

F990G300000

Base plate with Bolts for Pole Ø
76 mm h 3000/4000 mm with
Base



OPTIONAL
Accessory

F990C110000

Gelbox IPX8 for splicing
connectors



OPTIONAL
Accessory

F990C00A000

2 way terminal block 4 poles IP68
H20 stop. (ø5,5÷12mm cable)



OPTIONAL
Accessory

FA116

Base Plate and Fixing Bolts for
Pole Ø 102 mm h 4000/5000 mm
with Base



OPTIONAL
Accessory

F026Z060000

Honeycomb Louvre



OPTIONAL
Accessory

F026Z050006

Visor