

FLOS

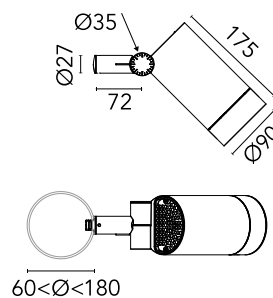
■ F02612GD033 Anthracite

Spine T 2 Ultra Elliptical 2 Dimmable Dali

Designed by Vincent Van Duysen, 2021



Power LED source included. Equipped with an integrated snoot for higher visual comfort: the asymmetrical cut visor is available as an accessory. Collimators are available as an accessory to modify the beam opening. Integrated electric power supply 220-240 V ON/OFF and adjustable 1-10 V or DALI. Integrated support for pole fixing, for poles with a diameter between 60 and 120 mm and a maximum thickness of 3 mm. Equipped with a 5 m neoprene cable (10 m upon request) for remote connection. To guarantee its water tightness, it is recommended to use flexible cables designed for outdoor use.



Are you a professional and your project needs consulting and support?

[BOOK AN APPOINTMENT](#)

Main specifications

EAN	8054793447452
Mounting	Pole Top
Environments	Outdoor wet location
Light source type	LED
Light sources included	Yes
LED type	Power LED
Number of lamps	1
System power (W)	10.5
Source flux (lm)	920
Lumen Output (lm)	699

Physical

Colour	Anthracite
Orientation	Adjustable
Rotation (°)	45
Longitudinal tilting (°)	165
Net weight (kg)	2.5
Package height (mm)	205
Package width (mm)	265
Package length (mm)	290
Package volume (m3)	0.02
IP internal	66

Download

[Mounting instructions](#)  ZIP

Photometric Files

[LDT / IES](#)  ZIP

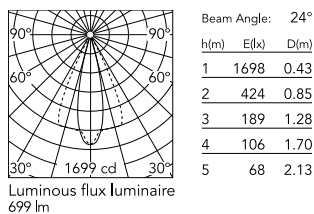
Technical Drawings

[2D](#)  ZIP

[3D](#)  ZIP



Schematic light drawing



Photometric

Light distribution	Asymmetric
CCT (K)	2700
CRI>	80

Electrical

Insulation class	I
Frequency (Hz)	50/60
Main voltage (Vac)	220-240
Power supply	Integrated
Dimmable	Yes
Power supply type	Dimmable DALI 1
Dimming interface	Dimmer Integrated
Emergency	No

Ecodesign and Energy Labelling

This product contains a light source of energy efficiency class E



Notes

5 m neoprene cable (10 m upon request) for remote connection.

Accessories & Power Supply



REQUIRED
Pole

FA24833

Pole Ø76 mm h 3500 mm(with
Base)



REQUIRED
Pole

FA25033

Pole Ø76 mm h 3500 mm (+500
mm In-ground)



REQUIRED
Pole

FA24933

Pole Ø76 mm h 4500 mm(with
Base)



REQUIRED
Pole

FA25133

Pole Ø76 mm h 4500 mm (+500
mm In-ground)



REQUIRED
Pole

FA414033

Pole Ø 102 mm h 4000 mm With
Base



REQUIRED
Pole

FA414533

Pole Ø 102 mm h 4000 mm (+500
mm In-ground)



REQUIRED
Pole

FA415033

Pole Ø 102 mm h 5000 mm With
Base



REQUIRED
Pole

FA415533

Pole Ø 102 mm h 5000 mm (+500
mm In-ground)



OPTIONAL
Accessory

F990C030000

4 way junction box 5 poles IP68
(6-14 mm cables)



OPTIONAL
Accessory

F990G300000

Base plate with Bolts for Pole Ø
76 mm h 3000/4000 mm with
Base



OPTIONAL
Accessory

F990C080000

Connector kit 5-pole flying socket
+ EU plug IP68.



OPTIONAL
Accessory

F029Z020000

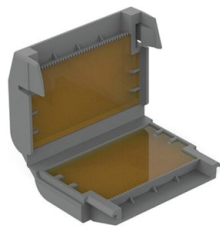
Converter Spine 2 Optic Medium
Flood



OPTIONAL
Accessory

F029Z021000

Converter Spine 2 Optic Flood



OPTIONAL
Accessory

F990C110000

Gelbox IPX8 for splicing
connectors



OPTIONAL
Accessory

F029Z023000

Converter Spine 2 Optic Elliptic 1



OPTIONAL
Accessory

FA116

Base Plate and Fixing Bolts for
Pole Ø 102 mm h 4000/5000 mm
with Base



OPTIONAL
Accessory

F029Z022000

Converter Spine 2 Optic Wide
Flood



OPTIONAL
Accessory

F026Z050033

Visor



OPTIONAL
Accessory

F029Z025000

Converter Spine 2 Optic Wall



OPTIONAL
Accessory

F029Z024000

Converter Spine 2 Optic Elliptic 2



OPTIONAL
Accessory

F026Z060000

Honeycomb Louvre