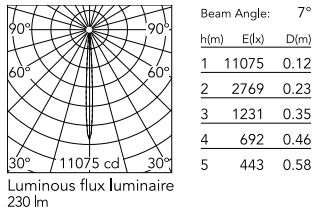




## Schematic light drawing



## Photometric

Light distribution	Symmetric
CCT (K)	2700
CRI>	80
Beam angle C0-180 (°)	6
Beam angle C90-270 (°)	6

## Electrical

Insulation class	I
Frequency (Hz)	50/60
Main voltage (Vac)	220-240
Power supply	Integrated
Dimmable	Yes
Power supply type	Dimmable DALI 1
Dimming interface	Dimmer Integrated
Emergency	No

## Ecodesign and Energy Labelling

This product contains a light source of energy efficiency class D



## Notes

5 m neoprene cable (10 m upon request) for remote connection.

## Accessories & Power Supply



REQUIRED  
Pole

FA24806

Pole Ø76 mm h 3500 mm(with  
Base)



REQUIRED  
Pole

FA24833

Pole Ø76 mm h 3500 mm(with  
Base)



REQUIRED  
Pole

FA25006

Pole Ø76 mm h 3500 mm (+500  
mm In-ground)



REQUIRED  
Pole

FA25033

Pole Ø76 mm h 3500 mm (+500  
mm In-ground)



REQUIRED  
Pole

FA24906

Pole Ø76 mm h 4500 mm(with  
Base)



REQUIRED  
Pole

FA24933

Pole Ø76 mm h 4500 mm(with  
Base)



REQUIRED  
Pole

FA25106

Pole Ø76 mm h 4500 mm (+500  
mm In-ground)



REQUIRED  
Pole

FA25133

Pole Ø76 mm h 4500 mm (+500  
mm In-ground)



REQUIRED Pole

FA414006

Pole Ø 102 mm h 4000 mm With Base



REQUIRED Pole

FA414033

Pole Ø 102 mm h 4000 mm With Base



REQUIRED Pole

FA414506

Pole Ø 102 mm h 4000 mm (+500 mm In-ground)



REQUIRED Pole

FA414533

Pole Ø 102 mm h 4000 mm (+500 mm In-ground)



REQUIRED Pole

FA415006

Pole Ø 102 mm h 5000 mm With Base



REQUIRED Pole

FA415033

Pole Ø 102 mm h 5000 mm With Base



REQUIRED Pole

FA415506

Pole Ø 102 mm h 5000 mm (+500 mm In-ground)



REQUIRED Pole

FA415533

Pole Ø 102 mm h 5000 mm (+500 mm In-ground)



OPTIONAL  
Accessory

F029Z020000

Converter Spine 2 Optic Medium  
Flood



OPTIONAL  
Accessory

F029Z021000

Converter Spine 2 Optic Flood



OPTIONAL  
Accessory

F029Z022000

Converter Spine 2 Optic Wide  
Flood



OPTIONAL  
Accessory

F029Z023000

Converter Spine 2 Optic Elliptic 1



OPTIONAL  
Accessory

F029Z024000

Converter Spine 2 Optic Elliptic 2



OPTIONAL  
Accessory

F029Z025000

Converter Spine 2 Optic Wall



OPTIONAL  
Accessory

F990C030000

4 way junction box 5 poles IP68  
(6-14 mm cables)



OPTIONAL  
Accessory

F990G300000

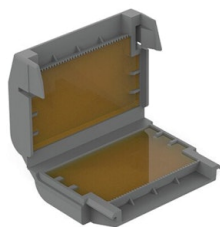
Base plate with Bolts for Pole Ø  
76 mm h 3000/4000 mm with  
Base



OPTIONAL  
Accessory

F990C080000

Connector kit 5-pole flying socket  
+ EU plug IP68.



OPTIONAL  
Accessory

F990C110000

Gelbox IPX8 for splicing  
connectors



OPTIONAL  
Accessory

FA116

Base Plate and Fixing Bolts for  
Pole Ø 102 mm h 4000/5000 mm  
with Base



OPTIONAL  
Accessory

F026Z060000

Honeycomb Louvre



OPTIONAL  
Accessory

F026Z050001

Visor