

# FLOS

F02612DB033 Anthracite

## Spine T 2 Ultra Dimmable 1-10V

Designed by Vincent Van Duysen, 2021



Power LED source included. Equipped with an integrated snoot for higher visual comfort: the asymmetrical cut visor is available as an accessory. Collimators are available as an accessory to modify the beam opening. Integrated electric power supply 220-240 V ON/OFF and adjustable 1-10 V or DALI. Integrated support for pole fixing, for poles with a diameter between 60 and 120 mm and a maximum thickness of 3 mm. Equipped with a 5 m neoprene cable (10 m upon request) for remote connection. To guarantee its water tightness, it is recommended to use flexible cables designed for outdoor use.



Are you a professional and your project needs consulting and support?

[BOOK AN APPOINTMENT](#)

### Main specifications

EAN	8054793446851
Mounting	Pole Top
Environments	Outdoor wet location
Light source type	LED
Light sources included	Yes
LED type	Power LED
Number of lamps	1
System power (W)	10.5
Source flux (lm)	920
Lumen Output (lm)	695

### Physical

Colour	Anthracite
Orientation	Adjustable
Rotation (°)	45
Longitudinal tilting (°)	165
Net weight (kg)	2.5
Package height (mm)	205
Package width (mm)	265
Package length (mm)	290
Package volume (m3)	0.02
IP internal	66

### Download

[Mounting instructions](#)  ZIP

### Photometric Files

[LDT / IES](#)  ZIP

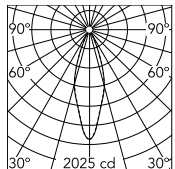
### Technical Drawings

[2D](#)  ZIP

[3D](#)  ZIP



## Schematic light drawing



Beam Angle:	32°		
h(m)	E(lx)	D(m)	
1	2025	0.57	
2	506	1.15	
3	225	1.72	
4	127	2.30	
5	81	2.87	

Luminous flux luminaire  
695 lm

## Photometric

Light distribution	Symmetric
CCT (K)	2700
CRI>	80
Beam angle C0-180 (°)	33
Beam angle C90-270 (°)	33

## Electrical

Insulation class	I
Frequency (Hz)	50/60
Main voltage (Vac)	220-240
Power supply	Integrated
Dimmable	Yes
Power supply type	Dimmable 1-10V
Dimming interface	Dimmer Integrated
Emergency	No

## Ecodesign and Energy Labelling

This product contains a light source of energy efficiency class E



## Notes

5 m neoprene cable (10 m upon request) for remote connection.

## Accessories & Power Supply



REQUIRED  
Pole

FA24833

Pole Ø76 mm h 3500 mm(with  
Base)



REQUIRED  
Pole

FA25033

Pole Ø76 mm h 3500 mm (+500  
mm In-ground)



REQUIRED  
Pole

FA24933

Pole Ø76 mm h 4500 mm(with  
Base)



REQUIRED  
Pole

FA25133

Pole Ø76 mm h 4500 mm (+500  
mm In-ground)



REQUIRED  
Pole

FA414033

Pole Ø 102 mm h 4000 mm With  
Base



REQUIRED  
Pole

FA414533

Pole Ø 102 mm h 4000 mm (+500  
mm In-ground)



REQUIRED  
Pole

FA415033

Pole Ø 102 mm h 5000 mm With  
Base



REQUIRED  
Pole

FA415533

Pole Ø 102 mm h 5000 mm (+500  
mm In-ground)



OPTIONAL  
Accessory

F990C030000

4 way junction box 5 poles IP68  
(6-14 mm cables)



OPTIONAL  
Accessory

F990G300000

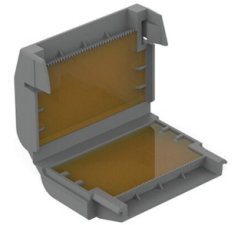
Base plate with Bolts for Pole Ø  
76 mm h 3000/4000 mm with  
Base



OPTIONAL  
Accessory

F026Z050033

Visor



OPTIONAL  
Accessory

F990C110000

Gelbox IPX8 for splicing  
connectors



OPTIONAL  
Accessory

F990C080000

Connector kit 5-pole flying socket  
+ EU plug IP68.



OPTIONAL  
Accessory

FA116

Base Plate and Fixing Bolts for  
Pole Ø 102 mm h 4000/5000 mm  
with Base



OPTIONAL  
Accessory

F029Z024000

Converter Spine 2 Optic Elliptic 2



OPTIONAL  
Accessory

F029Z022000

Converter Spine 2 Optic Wide  
Flood



OPTIONAL  
Accessory

F029Z020000

Converter Spine 2 Optic Medium  
Flood



OPTIONAL  
Accessory

F029Z023000

Converter Spine 2 Optic Elliptic 1



OPTIONAL  
Accessory

F029Z025000

Converter Spine 2 Optic Wall



OPTIONAL  
Accessory

F026Z060000

Honeycomb Louvre



OPTIONAL  
Accessory

F029Z021000

Converter Spine 2 Optic Flood