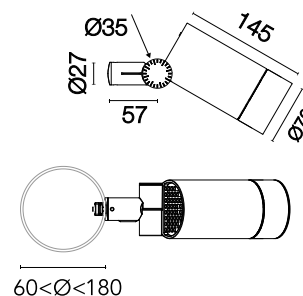


Spine T 1 Ultra

Designed by Vincent Van Duysen, 2021



Power LED source included. Equipped with an integrated snoot for higher visual comfort: the asymmetrical cut visor is available as an accessory. Collimators are available as an accessory to modify the beam opening. Integrated electric power supply 220-240 V ON/OFF. Integrated support for pole fixing, for poles with a diameter between 60 and 120 mm and a maximum thickness of 3 mm. Equipped with a 5 m neoprene cable (10 m upon request) for remote connection. To guarantee its water tightness, it is recommended to use flexible cables designed for outdoor use. Upon request: 1-10 V or DALI dimmable version with 24 Vdc remote power supply.



Are you a professional and your project needs consulting and support?

BOOK AN APPOINTMENT

Main specifications

EAN	8054793411460
Mounting	Pole Top
Environments	Outdoor wet location
Light source type	LED
Light sources included	Yes
LED type	Power LED
Number of lamps	1
System power (W)	7.9
Source flux (lm)	671
Lumen Output (lm)	550

Physical

Colour	Black
Orientation	Adjustable
Rotation (°)	45
Longitudinal tilting (°)	165
Cord length (mm)	5000
Net weight (kg)	0.9
Package height (mm)	265
Package width (mm)	290
Package length (mm)	205
Package volume (m3)	0.02
IP internal	66

Download

Mounting instructions [↓ ZIP](#)

Photometric Files

LDT / IES [↓ ZIP](#)

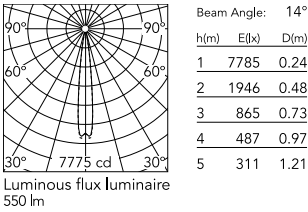
Technical Drawings

2D [↓ ZIP](#)

3D [↓ ZIP](#)



Schematic light drawing



Photometric

Light distribution	Symmetric
CCT (K)	2700
CRI>	80
Beam angle C0-180 (°)	14
Beam angle C90-270 (°)	14

Electrical



Insulation class	I
Frequency (Hz)	50/60
Main voltage (Vac)	220-240
Power supply	Integrated
Dimmable	No
Power supply type	Non Dimmable
Dimming interface	Not Dimmable
Emergency	No

Notes



5 m neoprene cable (10 m upon request) for remote connection.

Ecodesign and Energy Labelling

This product contains a light source of energy efficiency class E



Replaceable (LED only) light source by a professional



Replaceable control gear by a professional

Accessories & Power Supply



REQUIRED
Pole

FA24806
Pole Ø76 mm h 3500 mm(with
Base)



REQUIRED
Pole

FA24833
Pole Ø76 mm h 3500 mm(with
Base)



REQUIRED
Pole

FA25006
Pole Ø76 mm h 3500 mm (+500
mm In-ground)



REQUIRED
Pole

FA25033
Pole Ø76 mm h 3500 mm (+500
mm In-ground)



REQUIRED
Pole

FA24906
Pole Ø76 mm h 4500 mm(with
Base)



REQUIRED
Pole

FA24933
Pole Ø76 mm h 4500 mm(with
Base)



REQUIRED
Pole

FA25106
Pole Ø76 mm h 4500 mm (+500
mm In-ground)



REQUIRED
Pole

FA25133
Pole Ø76 mm h 4500 mm (+500
mm In-ground)



REQUIRED Pole

FA414006

Pole Ø 102 mm h 4000 mm With Base



REQUIRED Pole

FA414033

Pole Ø 102 mm h 4000 mm With Base



REQUIRED Pole

FA414506

Pole Ø 102 mm h 4000 mm (+500 mm In-ground)



REQUIRED Pole

FA414533

Pole Ø 102 mm h 4000 mm (+500 mm In-ground)



REQUIRED Pole

FA415006

Pole Ø 102 mm h 5000 mm With Base



REQUIRED Pole

FA415033

Pole Ø 102 mm h 5000 mm With Base



REQUIRED Pole

FA415506

Pole Ø 102 mm h 5000 mm (+500 mm In-ground)



REQUIRED Pole

FA415533

Pole Ø 102 mm h 5000 mm (+500 mm In-ground)



OPTIONAL
Accessory

F990C010000

3/4 way terminal block 4 poles
IP68 H2O stop. (ø5,5÷12mm
cable)



OPTIONAL
Accessory

F029Z010000

Converter Spine 1 Optic Medium
Flood



OPTIONAL
Accessory

F029Z011000

Converter Spine 1 Optic Flood



OPTIONAL
Accessory

F029Z012000

Converter Spine 1 Optic Wide
Flood



OPTIONAL
Accessory

F029Z013000

Converter Spine 1 Optic Elliptic 1



OPTIONAL
Accessory

F029Z014000

Converter Spine 1 Optic Elliptic 2



OPTIONAL
Accessory

F029Z015000

Converter Spine 1 Optic Wall
Washer



OPTIONAL
Accessory

F025Z060000

Honeycomb Louvre



OPTIONAL
Accessory

F025Z050030

Visor



OPTIONAL
Accessory

F990C00A000

2 way terminal block 4 poles IP68
H20 stop. (ø5,5÷12mm cable)



OPTIONAL
Accessory

F990G300000

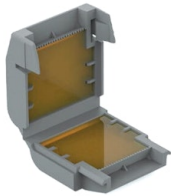
Base plate with Bolts for Pole Ø
76 mm h 3000/4000 mm with
Base



OPTIONAL
Accessory

FA116

Base Plate and Fixing Bolts for
Pole Ø 102 mm h 4000/5000 mm
with Base



OPTIONAL
Accessory

F990C100000

Gelbox IPX8 for splicing
connectors