

FLOS

F026Q2BB033 Anthracite

Spine L 2 Absolute Dimmable 1-10V

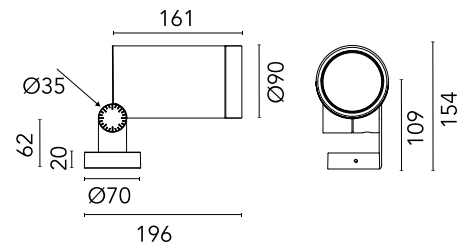
Designed by Vincent Van Duysen, 2021



LED COB light source integrated. Integrated electric power supply 220-240 V ON/OFF and adjustable 1-10 V or DALI. Minimum L-shaped mounting support integrated. Equipped with a 5 m neoprene cable (10 m upon request) for remote connection. To guarantee its water tightness, it is recommended to use flexible cables designed for outdoor use.

Are you a professional and your project needs consulting and support?

[BOOK AN APPOINTMENT](#)




Main specifications

EAN	8054793509754
Mounting	Ceiling, Wall, Ground
Environments	Outdoor wet location
Light source type	LED
Light sources included	Yes
LED type	LED array
Number of lamps	1
System power (W)	19.5
Source flux (lm)	2197
Lumen Output (lm)	1939

Physical

Colour	Anthracite
Orientation	Adjustable
Longitudinal tilting (°)	155
Net weight (kg)	2.5
Package height (mm)	205
Package width (mm)	290
Package length (mm)	265
Package volume (m3)	0.02
IP internal	66

Download


[Mounting instructions](#)  ZIP

Photometric Files

[LDT / IES](#)  ZIP

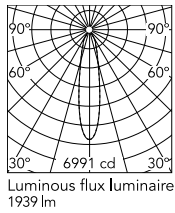
Technical Drawings

[2D](#)  ZIP

[3D](#)  ZIP



Schematic light drawing



Beam Angle: 22°

h(m)	E(lx)	D(m)
1	6991	0.38
2	1748	0.77
3	777	1.15
4	437	1.54
5	280	1.92

Luminous flux luminaire
1939 lm

Photometric

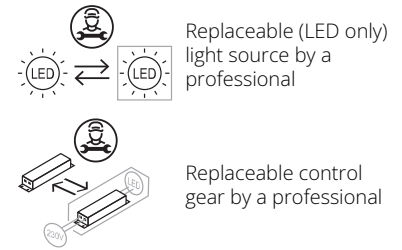
Light distribution	Symmetric
CCT (K)	2700
CRI>	80
Beam angle C0-180 (°)	22
Beam angle C90-270 (°)	22

Electrical

Insulation class	I
Frequency (Hz)	50/60
Main voltage (Vac)	220-240
Power supply	Integrated
Dimmable	Yes
Power supply type	Dimmable 1-10V
Dimming interface	Dimmer Integrated
Emergency	No

Ecodesign and Energy Labelling

This product contains a light source of energy efficiency class D



Notes

5 m neoprene cable (10 m upon request) for remote connection.

Accessories & Power Supply



OPTIONAL
Accessory

F026Z060000

Honeycomb Louvre



OPTIONAL
Accessory

F990C030000

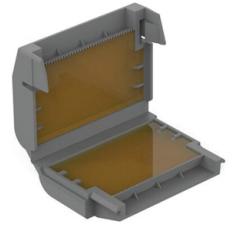
4 way junction box 5 poles IP68
(6-14 mm cables)



OPTIONAL
Accessory

F990C080000

Connector kit 5-pole flying socket
+ EU plug IP68.



OPTIONAL
Accessory

F990C110000

Gelbox IPX8 for splicing
connectors