

# FLOS

F025Q2BA012 Forest Green

## Spine L 1 Absolute

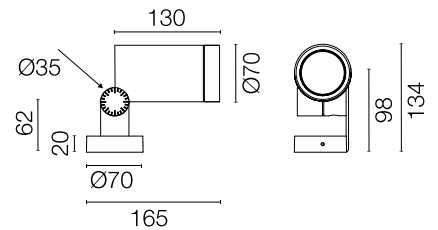
Designed by Vincent Van Duysen, 2021



LED COB light source integrated. Integrated electric power supply 220-240 V ON/OFF. Minimum L-shaped mounting support integrated. Equipped with a 5 m neoprene cable (10 m upon request) for remote connection. To guarantee its water tightness, it is recommended to use flexible cables designed for outdoor use. Upon request: 1-10 V or DALI dimmable version with 24 Vdc remote power supply.

Are you a professional and your project needs consulting and support?

[BOOK AN APPOINTMENT](#)



### Main specifications

|                        |                       |
|------------------------|-----------------------|
| EAN                    | 8054793437002         |
| Mounting               | Ceiling, Wall, Ground |
| Light source type      | LED                   |
| Light sources included | Yes                   |
| LED type               | LED array             |
| Number of lamps        | 1                     |
| System power (W)       | 11                    |
| Source flux (lm)       | 1247                  |
| Lumen Output (lm)      | 923                   |

### Physical

|                          |              |
|--------------------------|--------------|
| Colour                   | Forest Green |
| Orientation              | Adjustable   |
| Longitudinal tilting (°) | 155          |
| Net weight (kg)          | 0.9          |
| Package height (mm)      | 190          |
| Package width (mm)       | 245          |
| Package length (mm)      | 280          |
| Package volume (m3)      | 0.01         |
| IP internal              | 66           |

### Download

[Mounting instructions](#) ZIP

### Photometric Files

[LDT / IES](#) ZIP

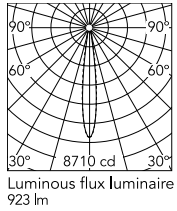
### Technical Drawings

[2D](#) ZIP

[3D](#) ZIP



## Schematic light drawing



| h(m) | E(lx) | D(m) |
|------|-------|------|
| 1    | 8710  | 0.25 |
| 2    | 2178  | 0.49 |
| 3    | 968   | 0.74 |
| 4    | 544   | 0.98 |
| 5    | 348   | 1.23 |

## Photometric

|                        |           |
|------------------------|-----------|
| Lighting type          | Direct    |
| Light distribution     | Symmetric |
| CCT (K)                | 2700      |
| CRI>                   | 80        |
| Beam angle C0-180 (°)  | 15        |
| Beam angle C90-270 (°) | 15        |

## Electrical

|                    |              |
|--------------------|--------------|
| Insulation class   | I            |
| Frequency (Hz)     | 50/60        |
| Main voltage (Vac) | 220-240      |
| Power supply       | Integrated   |
| Dimmable           | No           |
| Power supply type  | Non Dimmable |
| Dimming interface  | Not Dimmable |
| Emergency          | No           |

## Ecodesign and Energy Labelling

This product contains a light source of energy efficiency class E



## Notes

5 m neoprene cable (10 m upon request) for remote connection.

## Accessories & Power Supply



OPTIONAL  
Accessory

F025Z060000

Honeycomb Louvre



OPTIONAL  
Accessory

F990C00A000

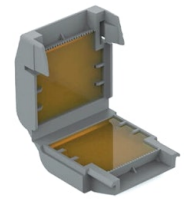
2 way terminal block 4 poles IP68  
H2O stop. (ø5,5÷12mm cable)



OPTIONAL  
Accessory

F990C010000

3/4 way terminal block 4 poles  
IP68 H2O stop. (ø5,5÷12mm  
cable)



OPTIONAL  
Accessory

F990C100000

Gelbox IPX8 for splicing  
connectors