

FLOS

F025Q2BA001 White

Spine L 1 Absolute

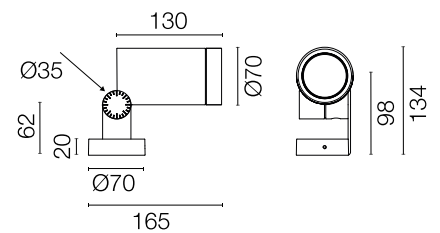
Designed by Vincent Van Duysen, 2021



LED COB light source integrated. Integrated electric power supply 220-240 V ON/OFF. Minimum L-shaped mounting support integrated. Equipped with a 5 m neoprene cable (10 m upon request) for remote connection. To guarantee its water tightness, it is recommended to use flexible cables designed for outdoor use. Upon request: 1-10 V or DALI dimmable version with 24 Vdc remote power supply.

Are you a professional and your project needs consulting and support?

[BOOK AN APPOINTMENT](#)



Main specifications

EAN	8054793436982
Mounting	Ceiling, Wall, Ground
Light source type	LED
Light sources included	Yes
LED type	LED array
Number of lamps	1
System power (W)	11
Source flux (lm)	1247
Lumen Output (lm)	923

Physical

Colour	White
Orientation	Adjustable
Longitudinal tilting (°)	155
Net weight (kg)	0.9
Package height (mm)	190
Package width (mm)	245
Package length (mm)	280
Package volume (m3)	0.01
IP internal	66

Download

[Mounting instructions](#)  ZIP

Photometric Files

[LDT / IES](#)  ZIP

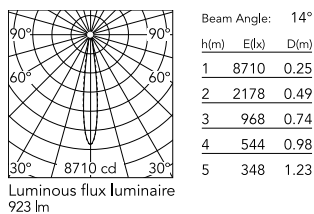
Technical Drawings

[2D](#)  ZIP

[3D](#)  ZIP



Schematic light drawing



Photometric

Lighting type	Direct
Light distribution	Symmetric
CCT (K)	2700
CRI>	80
Beam angle C0-180 (°)	15
Beam angle C90-270 (°)	15

Electrical

Insulation class	I
Frequency (Hz)	50/60
Main voltage (Vac)	220-240
Power supply	Integrated
Dimmable	No
Power supply type	Non Dimmable
Dimming interface	Not Dimmable
Emergency	No

Ecodesign and Energy Labelling

This product contains a light source of energy efficiency class E



Notes

5 m neoprene cable (10 m upon request) for remote connection.

Accessories & Power Supply



OPTIONAL
Accessory

F025Z060000

Honeycomb Louvre



OPTIONAL
Accessory

F990C00A000

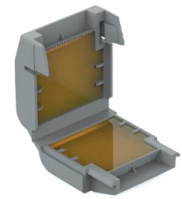
2 way terminal block 4 poles IP68
H2O stop. (ø5,5÷12mm cable)



OPTIONAL
Accessory

F990C010000

3/4 way terminal block 4 poles
IP68 H2O stop. (ø5,5÷12mm
cable)



OPTIONAL
Accessory

F990C100000

Gelbox IPX8 for splicing
connectors