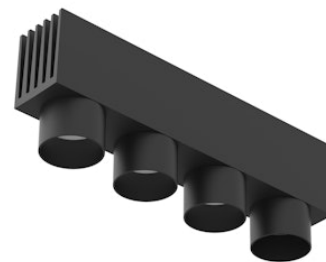


# FLOS

03.6305.14C Black

## Multi Spot 4 On Board Dimmer

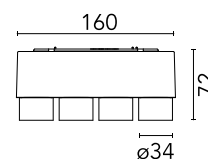
Designed by FLOS Architectural, 2016



Accent lighting LED module to be installed in The Running Magnet System. Built-in DC/DC electronic voltage converter.

Are you a professional and your project needs consulting and support?

[BOOK AN APPOINTMENT](#)



### Main specifications

Mounting	Track
Environments	Indoor dry location
Light source type	LED
Light sources included	Yes
LED type	Power LED
Lamp category	LED
Number of lamps	1
Power (W)	10
System power (W)	11.3
Source flux (lm)	878
Lumen Output (lm)	630
Efficacy (lm/W)	55.75

### Physical

Colour	Black
Orientation	Fixed
Length (mm)	160
Net weight (kg)	0.35
IP internal	20

### Download

Mounting instructions [↓ PDF](#)

### Photometric Files

LDT / IES [↓ ZIP](#)

### Technical Drawings

2D [↓ ZIP](#)

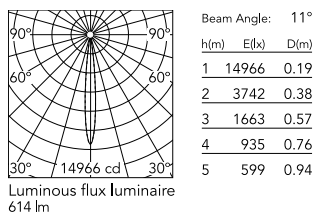
3D [↓ ZIP](#)



### Ecodesign and Energy Labelling

 Replaceable (LED only) light source by a professional

## Schematic light drawing



### Photometric

Lighting type	Direct
Light distribution	Symmetric
CCT (K)	2700
CRI>	90
McAdam steps (SDCM)	3
LED Life / Failure Ratio	L80B50>50.000h (Tc=85°C)
Beam angle C0-180 (°)	11
Beam angle C90-270 (°)	11
UGR <sub>L</sub>	<10

### Electrical

Insulation class	III
Forward voltage (V)	24
Power supply	Remote excluded
Dimmable	Yes
Power supply type	Dimmer on board
Dimming range (%)	40-100
Dimming interface	Dimmer Integrated

### Notes

For wireless lighting control, choose integrated Casambi versions. For the sizing of the installation keep a safety margin of 15% of the maximum power of the LED power source.

## Accessories & Power Supply



OPTIONAL  
Accessory

Optical

08.8759.00

Elliptical lens



OPTIONAL  
Accessory

Optical

08.8760.00

Frosted Medium lens



OPTIONAL  
Accessory

Optical

08.8761.00

Frosted Flood lens