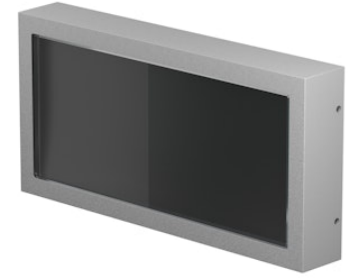


FLOS

F015M30A006 Grey

Mile Path 2

Designed by Antonio Citterio, 2020

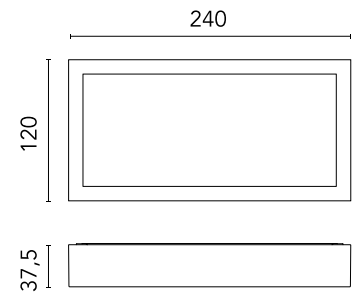


179lm - 3000K - CRI> 80

LED light source included. Integrated 220-240V ON/OFF and 1-10V/DALI dimmable electrical power. Equipped with a cable gland for safety connection with IP tightness. Fixing bracket included.

Are you a professional and your project needs consulting and support?

[BOOK AN APPOINTMENT](#)



Main specifications

| | |
|------------------------|---------------|
| EAN | 8054793237732 |
| Mounting | Wall |
| Light source type | LED |
| Light sources included | Yes |
| LED type | Power LED |
| Number of lamps | 1 |
| System power (W) | 7.6 |
| Lumen Output (lm) | 179 |

Physical

| | |
|---------------------|-------|
| Colour | Grey |
| Orientation | Fixed |
| Net weight (kg) | 1.1 |
| Package height (mm) | 90 |
| Package width (mm) | 145 |
| Package length (mm) | 285 |
| IP internal | 66 |

Download

[Mounting instructions](#) ZIP

Photometric Files

[LDT / IES](#) ZIP

Technical Drawings

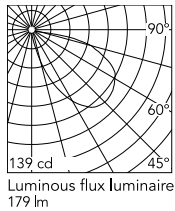
[2D](#) ZIP

[3D](#) ZIP

[Bim](#) ZIP



Schematic light drawing



Beam Angle: 57°

| h(m) | E(lx) | D(m) |
|------|-------|-------|
| 1 | 71 | 4.45 |
| 2 | 18 | 8.89 |
| 3 | 8 | 13.34 |
| 4 | 4 | 17.78 |
| 5 | 3 | 22.23 |

Photometric

| | |
|--------------------|------------|
| Lighting type | Direct |
| Light distribution | Asymmetric |
| CCT (K) | 3000 |
| CRI> | 80 |
| Extreme cut off | No |

Electrical

| | |
|--------------------|--------------|
| Insulation class | I |
| Frequency (Hz) | 50/60 |
| Main voltage (Vac) | 220-240 |
| Power supply | Integrated |
| Dimmable | No |
| Power supply type | Non Dimmable |
| Dimming interface | Not Dimmable |
| Emergency | No |

Ecodesign and Energy Labelling

This product contains a light source of energy efficiency class D

