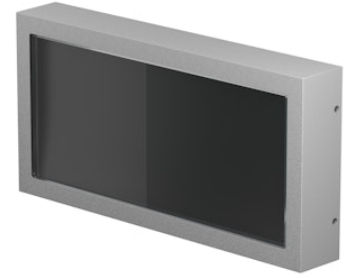


FLOS

F015M20B006 Grey

Mile Path 2 Dimmable 1-10V

Designed by Antonio Citterio, 2020

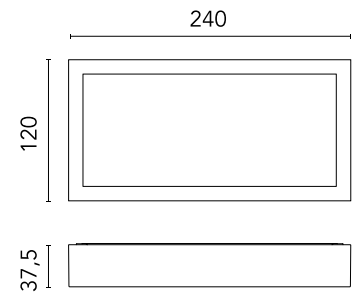


172lm - 2700K - CRI> 80

LED light source included. Integrated 220-240V ON/OFF and 1-10V/DALI dimmable electrical power. Equipped with a cable gland for safety connection with IP tightness. Fixing bracket included.

Are you a professional and your project needs consulting and support?

[BOOK AN APPOINTMENT](#)



Main specifications

EAN	8054793237510
Mounting	Wall
Light source type	LED
Light sources included	Yes
LED type	Power LED
Number of lamps	1
System power (W)	7.6
Lumen Output (lm)	172

Physical

Colour	Grey
Orientation	Fixed
Net weight (kg)	1.1
Package height (mm)	90
Package width (mm)	145
Package length (mm)	285
IP internal	66

Download

[Mounting instructions](#) ZIP

Photometric Files

[LDT / IES](#) ZIP

Technical Drawings

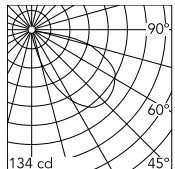
[2D](#) ZIP

[3D](#) ZIP

[Bim](#) ZIP



Schematic light drawing



Beam Angle:	57°	
h(m)	E(lx)	D(m)
1	68	4.45
2	17	8.89
3	8	13.34
4	4	17.78
5	3	22.23

Luminous flux luminaire
172 lm

Photometric

Lighting type	Direct
Light distribution	Asymmetric
CCT (K)	2700
CRI>	80
Extreme cut off	No

Electrical

Insulation class	I
Frequency (Hz)	50/60
Main voltage (Vac)	220-240
Power supply	Integrated
Dimmable	Yes
Power supply type	Dimmable 1-10V
Dimming interface	Dimmer Integrated
Emergency	No

Ecodesign and Energy Labelling

This product contains a light source of energy efficiency class E

