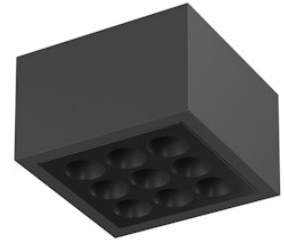


FLOS

F030C42A033 Anthracite

Mile Ceiling 2

Designed by Antonio Citterio, 2020



1450lm - 4000K - CRI> 80 - Beam° 26

LED light source included. Integrated 220-240V ON/OFF and 1-10V/DALI dimmable electrical power. Equipped with double cable gland for inlet and outlet connection. Fixing bracket included.

Are you a professional and your project needs consulting and support?

[BOOK AN APPOINTMENT](#)



Main specifications

EAN	8054793554259
Mounting	Ceiling
Environments	Outdoor wet location
Light source type	LED
Light sources included	Yes
LED type	Power LED
Number of lamps	1
System power (W)	15
Lumen Output (lm)	1450

Physical

Colour	Anthracite
Orientation	Fixed
Net weight (kg)	1.62
Package height (mm)	130
Package width (mm)	185
Package length (mm)	185
IP internal	66

Download

[Mounting instructions](#) ZIP

Photometric Files

[LDT / IES](#) ZIP

Technical Drawings

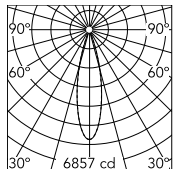
[2D](#) ZIP

[3D](#) ZIP

[Bim](#) ZIP



Schematic light drawing



Beam Angle: 26°

h(m)	E(lx)	D(m)
1	6857	0.45
2	1714	0.91
3	762	1.36
4	429	1.82
5	274	2.27

Luminous flux luminaire
1450 lm

Photometric

Lighting type	Direct
Light distribution	Symmetric
CCT (K)	4000
CRI>	80
Beam angle C0-180 (°)	26
Beam angle C90-270 (°)	26
Extreme cut off	No

Electrical

Insulation class	I
Frequency (Hz)	50/60
Main voltage (Vac)	220-240
Power supply	Integrated
Dimmable	No
Power supply type	Non Dimmable
Dimming interface	Not Dimmable
Emergency	No

Ecodesign and Energy Labelling

This product contains a light source of energy efficiency class D



Accessories & Power Supply



OPTIONAL Accessory

F990C00A000

2 way terminal block 4 poles IP68
H2O stop. (ø5,5÷12mm cable)



OPTIONAL Accessory

F990C010000

3/4 way terminal block 4 poles
IP68 H2O stop. (ø5,5÷12mm
cable)