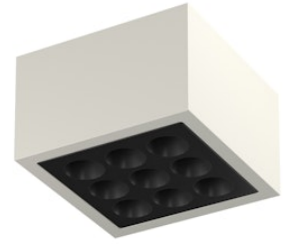


FLOS

F030C22D000 Primer

Mile Ceiling 2 Dimmable DALI

Designed by Antonio Citterio, 2020



1349lm - 2700K - CRI> 80 - Beam° 26

LED light source included. Integrated 220-240V ON/OFF and 1-10V/DALI dimmable electrical power. Equipped with double cable gland for inlet and outlet connection. Fixing bracket included.

Are you a professional and your project needs consulting and support?

[BOOK AN APPOINTMENT](#)



Main specifications

EAN	805479352132
Mounting	Ceiling
Environments	Outdoor wet location
Light source type	LED
Light sources included	Yes
LED type	Power LED
Number of lamps	1
System power (W)	15
Lumen Output (lm)	1349

Physical

Colour	Primer
Orientation	Fixed
Net weight (kg)	1.62
Package height (mm)	130
Package width (mm)	185
Package length (mm)	185
IP internal	66

Download

[Mounting instructions](#)  ZIP

Photometric Files

[LDT / IES](#)  ZIP

Technical Drawings

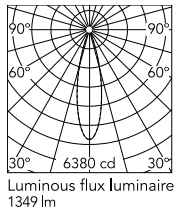
[2D](#)  ZIP

[3D](#)  ZIP

[Bim](#)  ZIP



Schematic light drawing



Beam Angle: 26°

h(m)	E(lx)	D(m)
1	6380	0.45
2	1595	0.91
3	709	1.36
4	399	1.82
5	255	2.27

Photometric

Lighting type	Direct
Light distribution	Symmetric
CCT (K)	2700
CRI>	80
Beam angle C0-180 (°)	26
Beam angle C90-270 (°)	26
Extreme cut off	No

Electrical

Insulation class	I
Frequency (Hz)	50/60
Main voltage (Vac)	220-240
Power supply	Integrated
Dimmable	Yes
Power supply type	Dimmable DALI 1
Dimming interface	Dimmer Integrated
Emergency	No

Ecodesign and Energy Labelling

This product contains a light source of energy efficiency class E



Accessories & Power Supply



OPTIONAL Accessory

F990C030000

4 way junction box 5 poles IP68
(6-14 mm cables)



OPTIONAL Accessory

F990C080000

Connector kit 5-pole flying socket
+ EU plug IP68.