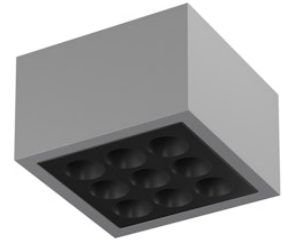


FLOS

F030C43B006 Grey

Mile Ceiling 2 Dimmable 1-10V

Designed by Antonio Citterio, 2020



1326lm - 4000K - CRI> 80 - Beam° 40

LED light source included. Integrated 220-240V ON/OFF and 1-10V/DALI dimmable electrical power. Equipped with double cable gland for inlet and outlet connection. Fixing bracket included.

Are you a professional and your project needs consulting and support?

[BOOK AN APPOINTMENT](#)



Main specifications

| | |
|------------------------|----------------------|
| EAN | 8054793554709 |
| Mounting | Ceiling |
| Environments | Outdoor wet location |
| Light source type | LED |
| Light sources included | Yes |
| LED type | Power LED |
| Number of lamps | 1 |
| System power (W) | 15 |
| Lumen Output (lm) | 1326 |

Physical

| | |
|---------------------|-------|
| Colour | Grey |
| Orientation | Fixed |
| Net weight (kg) | 1.62 |
| Package height (mm) | 130 |
| Package width (mm) | 185 |
| Package length (mm) | 185 |
| IP internal | 66 |

Download

[Mounting instructions](#) ZIP

Photometric Files

[LDT / IES](#) ZIP

Technical Drawings

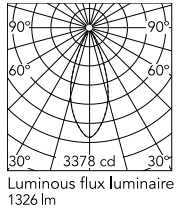
[2D](#) ZIP

[3D](#) ZIP

[Bim](#) ZIP



Schematic light drawing



| h(m) | E(lx) | D(m) |
|------|-------|------|
| 1 | 3378 | 0.70 |
| 2 | 845 | 1.40 |
| 3 | 375 | 2.09 |
| 4 | 211 | 2.79 |
| 5 | 135 | 3.49 |

Photometric

| | |
|------------------------|-----------|
| Lighting type | Direct |
| Light distribution | Symmetric |
| CCT (K) | 4000 |
| CRI> | 80 |
| Beam angle C0-180 (°) | 40 |
| Beam angle C90-270 (°) | 40 |
| Extreme cut off | No |

Electrical

| | |
|--------------------|-------------------|
| Insulation class | I |
| Frequency (Hz) | 50/60 |
| Main voltage (Vac) | 220-240 |
| Power supply | Integrated |
| Dimmable | Yes |
| Power supply type | Dimmable 1-10V |
| Dimming interface | Dimmer Integrated |
| Emergency | No |

Ecodesign and Energy Labelling

This product contains a light source of energy efficiency class D



Accessories & Power Supply



OPTIONAL Accessory

F990C030000

4 way junction box 5 poles IP68
(6-14 mm cables)



OPTIONAL Accessory

F990C080000

Connector kit 5-pole flying socket
+ EU plug IP68.