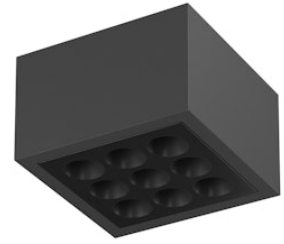


FLOS

F030C23B033 Anthracite

Mile Ceiling 2 Dimmable 1-10V

Designed by Antonio Citterio, 2020



1233lm - 2700K - CRI> 80 - Beam° 40

LED light source included. Integrated 220-240V ON/OFF and 1-10V/DALI dimmable electrical power. Equipped with double cable gland for inlet and outlet connection. Fixing bracket included.

Are you a professional and your project needs consulting and support?

[BOOK AN APPOINTMENT](#)



Main specifications

EAN	8054793552408
Mounting	Ceiling
Environments	Outdoor wet location
Light source type	LED
Light sources included	Yes
LED type	Power LED
Number of lamps	1
System power (W)	15
Lumen Output (lm)	1233

Physical

Colour	Anthracite
Orientation	Fixed
Net weight (kg)	1.62
Package height (mm)	130
Package width (mm)	185
Package length (mm)	185
IP internal	66

Download

[Mounting instructions](#) ZIP

Photometric Files

[LDT / IES](#) ZIP

Technical Drawings

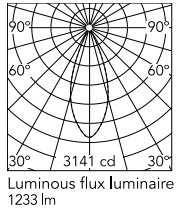
[2D](#) ZIP

[3D](#) ZIP

[Bim](#) ZIP



Schematic light drawing



h(m)	E(lx)	D(m)
1	3141	0.70
2	785	1.40
3	349	2.09
4	196	2.79
5	126	3.49

3141 cd

Photometric

Lighting type	Direct
Light distribution	Symmetric
CCT (K)	2700
CRI>	80
Beam angle C0-180 (°)	40
Beam angle C90-270 (°)	40
Extreme cut off	No

Electrical

Insulation class	I
Frequency (Hz)	50/60
Main voltage (Vac)	220-240
Power supply	Integrated
Dimmable	Yes
Power supply type	Dimmable 1-10V
Dimming interface	Dimmer Integrated
Emergency	No

Ecodesign and Energy Labelling

This product contains a light source of energy efficiency class E



Accessories & Power Supply



OPTIONAL Accessory

F990C030000

4 way junction box 5 poles IP68
(6-14 mm cables)



OPTIONAL Accessory

F990C080000

Connector kit 5-pole flying socket
+ EU plug IP68.