

# FLOS

03.2303.14A Black

## Micro Spot

Designed by FLOS Architectural, 2020



Accent lighting LED module to be installed in The Micro Running Magnet System.  
Built-in DC/DC electronic voltage converter.

Are you a professional and your project needs consulting and support?

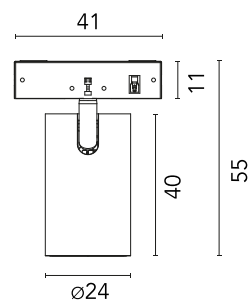
BOOK AN APPOINTMENT

### Main specifications

Mounting	Track
Environments	Indoor dry location
Light source type	LED
Light sources included	Yes
LED type	Power LED
Lamp category	LED
Number of lamps	1
Power (W)	3
System power (W)	3
Source flux (lm)	335
Lumen Output (lm)	243
Efficacy (lm/W)	81

### Physical

Colour	Black
Orientation	Adjustable
Rotation (°)	267
Longitudinal tilting (°)	90
Spot diameter (mm)	24
Length (mm)	41
Net weight (kg)	0.03
IP internal	20



### Download

Mounting instructions  PDF

### Photometric Files

LDT / IES  ZIP

### Technical Drawings

2D  ZIP

3D  ZIP

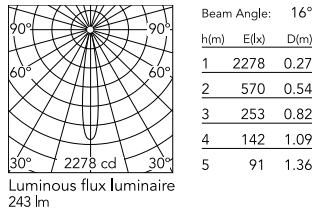
 Bim  ZIP



### Ecodesign and Energy Labelling

  Replaceable (LED only) light source by a professional

## Schematic light drawing



### Photometric

Lighting type	Direct
Light distribution	Symmetric
CCT (K)	5000
CRI>	90
McAdam steps (SDCM)	2
Beam angle C0-180 (°)	16
Beam angle C90-270 (°)	16
UGR <sub>L</sub>	<16

### Electrical

Insulation class	III
Forward voltage (V)	24
Power supply	Remote excluded
Dimmable	Yes
Power supply type	Non Dimmable, Dimmable
Dimming interface	Remote Dimmable (Dimmer Not Included)

### Notes

Honeycomb accessory available. Must be ordered separately.

## Accessories & Power Supply



OPTIONAL  
Accessory

Optical

08.0190.14

Honeycomb for Micro Spot