

FLOS

03.2302.14A Black

Micro Spot

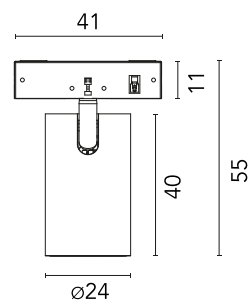
Designed by FLOS Architectural, 2020



Accent lighting LED module to be installed in The Micro Running Magnet System.
Built-in DC/DC electronic voltage converter.

Are you a professional and your project needs consulting and support?

[BOOK AN APPOINTMENT](#)



Main specifications

Mounting	Track
Environments	Indoor dry location
Light source type	LED
Light sources included	Yes
LED type	Power LED
Lamp category	LED
Number of lamps	1
Power (W)	3
System power (W)	3
Source flux (lm)	315
Lumen Output (lm)	240
Efficacy (lm/W)	80

Physical

Colour	Black
Orientation	Adjustable
Rotation (°)	267
Longitudinal tilting (°)	90
Spot diameter (mm)	24
Length (mm)	41
Net weight (kg)	0.03
IP internal	20

Download

Mounting instructions [PDF](#)

Photometric Files

LDT / IES [ZIP](#)

Technical Drawings

2D [ZIP](#)

3D [ZIP](#)

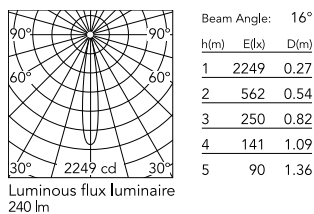
[Bim](#) [ZIP](#)



Ecodesign and Energy Labelling

Replaceable (LED only) light source by a professional

Schematic light drawing



Photometric

Lighting type	Direct
Light distribution	Symmetric
CCT (K)	4000
CRI>	90
McAdam steps (SDCM)	2
Beam angle C0-180 (°)	16
Beam angle C90-270 (°)	16
UGR _L	<16

Electrical

Insulation class	III
Forward voltage (V)	24
Power supply	Remote excluded
Dimmable	Yes
Power supply type	Non Dimmable, Dimmable
Dimming interface	Remote Dimmable (Dimmer Not Included)

Notes

Honeycomb accessory available. Must be ordered separately.

Accessories & Power Supply



OPTIONAL
Accessory

Optical

08.0190.14

Honeycomb for Micro Spot