

# FLOS

03.2301.40A White

## Micro Spot

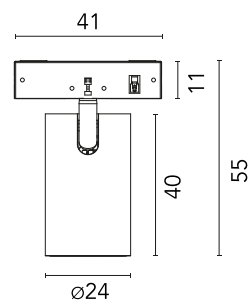
Designed by FLOS Architectural, 2020



Accent lighting LED module to be installed in The Micro Running Magnet System.  
Built-in DC/DC electronic voltage converter.

Are you a professional and your project needs consulting and support?

[BOOK AN APPOINTMENT](#)



### Main specifications

|                        |                     |
|------------------------|---------------------|
| Mounting               | Track               |
| Environments           | Indoor dry location |
| Light source type      | LED                 |
| Light sources included | Yes                 |
| LED type               | Power LED           |
| Lamp category          | LED                 |
| Number of lamps        | 1                   |
| Power (W)              | 3                   |
| System power (W)       | 3                   |
| Source flux (lm)       | 295                 |
| Lumen Output (lm)      | 224                 |
| Efficacy (lm/W)        | 74.67               |

### Physical

|                          |            |
|--------------------------|------------|
| Colour                   | White      |
| Orientation              | Adjustable |
| Rotation (°)             | 267        |
| Longitudinal tilting (°) | 90         |
| Spot diameter (mm)       | 24         |
| Length (mm)              | 41         |
| Net weight (kg)          | 0.03       |
| IP internal              | 20         |

### Download

Mounting instructions [PDF](#)

### Photometric Files

LDT / IES [ZIP](#)

### Technical Drawings

2D [ZIP](#)

3D [ZIP](#)

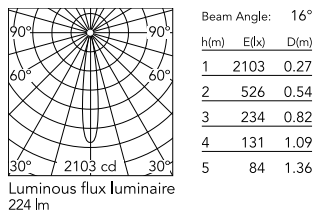
[Bim](#) [ZIP](#)



### Ecodesign and Energy Labelling

Replaceable (LED only) light source by a professional

## Schematic light drawing



### Photometric

|                        |           |
|------------------------|-----------|
| Lighting type          | Direct    |
| Light distribution     | Symmetric |
| CCT (K)                | 3000      |
| CRI>                   | 90        |
| McAdam steps (SDCM)    | 2         |
| Beam angle C0-180 (°)  | 16        |
| Beam angle C90-270 (°) | 16        |
| UGR <sub>L</sub>       | <16       |

### Electrical

|                     |                                       |
|---------------------|---------------------------------------|
| Insulation class    | III                                   |
| Forward voltage (V) | 24                                    |
| Power supply        | Remote excluded                       |
| Dimmable            | Yes                                   |
| Power supply type   | Non Dimmable, Dimmable                |
| Dimming interface   | Remote Dimmable (Dimmer Not Included) |

### Notes

Honeycomb accessory available. Must be ordered separately.

## Accessories & Power Supply



OPTIONAL  
Accessory

Optical

08.0190.14

Honeycomb for Micro Spot