

# FLOS

03.2227.14A Black

## Micro Spot

Designed by FLOS Architectural, 2020



LED - Power LED - 3W - 217lm - 4000K - CRI> 90 - Beam° 31

Accent lighting LED module to be installed in The Micro Running Magnet System.  
Built-in DC/DC electronic voltage converter.

Are you a professional and your project needs consulting and support?

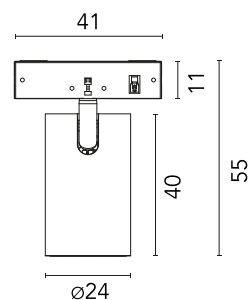
[BOOK AN APPOINTMENT](#)

### Main specifications

Mounting	Track
Environments	Indoor dry location
Light source type	LED
Light sources included	Yes
LED type	Power LED
Lamp category	LED
Number of lamps	1
Power (W)	3
System power (W)	3
Source flux (lm)	315
Lumen Output (lm)	217
Efficacy (lm/W)	72.33

### Physical

Colour	Black
Orientation	Adjustable
Rotation (°)	267
Longitudinal tilting (°)	90
Spot diameter (mm)	24
Length (mm)	41
Net weight (kg)	0.03
IP internal	20



### Download

Mounting instructions [PDF](#)

### Photometric Files

LDT / IES [ZIP](#)

### Technical Drawings

2D [ZIP](#)

3D [ZIP](#)

Bim [ZIP](#)



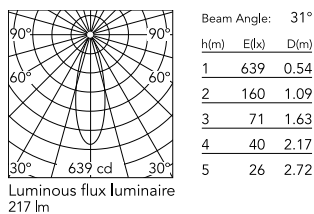
### Ecodesign and Energy

#### Labelling



Replaceable (LED only)  
light source by a  
professional

## Schematic light drawing



## Photometric

Lighting type	Direct
Light distribution	Symmetric
CCT (K)	4000
CRI>	90
McAdam steps (SDCM)	2
Beam angle C0-180 (°)	31
Beam angle C90-270 (°)	31
UGR <sub>L</sub>	<19

## Electrical

Insulation class	III
Forward voltage (V)	24
Power supply	Remote excluded
Dimmable	Yes
Power supply type	Non Dimmable, Dimmable
Dimming interface	Remote Dimmable (Dimmer Not Included)

## Accessories & Power Supply



OPTIONAL  
Accessory

Optical

08.0190.14

Honeycomb for Micro Spot