

# FLOS

03.2226.14A Black

## Micro Spot

Designed by FLOS Architectural, 2020

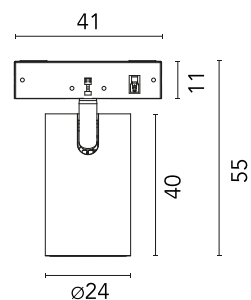


LED - Power LED - 3W - 189lm - 3000K - CRI> 90 - Beam° 31

Accent lighting LED module to be installed in The Micro Running Magnet System.  
Built-in DC/DC electronic voltage converter.

Are you a professional and your project needs consulting and support?

[BOOK AN APPOINTMENT](#)



### Main specifications

Mounting	Track
Environments	Indoor dry location
Light source type	LED
Light sources included	Yes
LED type	Power LED
Lamp category	LED
Number of lamps	1
Power (W)	3
System power (W)	3
Source flux (lm)	295
Lumen Output (lm)	189
Efficacy (lm/W)	63

### Physical

Colour	Black
Orientation	Adjustable
Rotation (°)	267
Longitudinal tilting (°)	90
Spot diameter (mm)	24
Length (mm)	41
Net weight (kg)	0.03
IP internal	20

### Download

Mounting instructions [PDF](#)

### Photometric Files

LDT / IES [ZIP](#)

### Technical Drawings

2D [ZIP](#)

3D [ZIP](#)

Bim [ZIP](#)



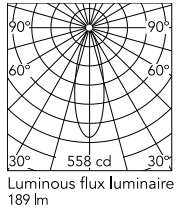
### Ecodesign and Energy

#### Labelling



Replaceable (LED only)  
light source by a  
professional

## Schematic light drawing



h(m)	E(lx)	D(m)
1	558	0.54
2	139	1.09
3	62	1.63
4	35	2.17
5	22	2.72

## Photometric

Lighting type	Direct
Light distribution	Symmetric
CCT (K)	3000
CRI>	90
McAdam steps (SDCM)	2
Beam angle C0-180 (°)	31
Beam angle C90-270 (°)	31
UGR <sub>L</sub>	<19

## Electrical

Insulation class	III
Forward voltage (V)	24
Power supply	Remote excluded
Dimmable	Yes
Power supply type	Non Dimmable, Dimmable
Dimming interface	Remote Dimmable (Dimmer Not Included)

## Accessories & Power Supply



OPTIONAL  
Accessory

Optical

08.0190.14

Honeycomb for Micro Spot