

FLOS

03.2221.40A White

Micro Spot

Designed by FLOS Architectural, 2020

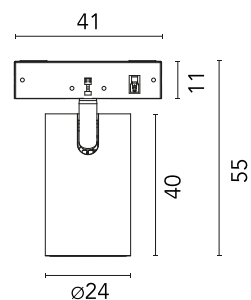


LED - Power LED - 3W - 207lm - 3000K - CRI> 90 - Beam° 28

Accent lighting LED module to be installed in The Micro Running Magnet System.
Built-in DC/DC electronic voltage converter.

Are you a professional and your project needs consulting and support?

[BOOK AN APPOINTMENT](#)



Main specifications

Mounting	Track
Environments	Indoor dry location
Light source type	LED
Light sources included	Yes
LED type	Power LED
Lamp category	LED
Number of lamps	1
Power (W)	3
System power (W)	3
Source flux (lm)	295
Lumen Output (lm)	207
Efficacy (lm/W)	69

Physical

Colour	White
Orientation	Adjustable
Rotation (°)	267
Longitudinal tilting (°)	90
Spot diameter (mm)	24
Length (mm)	41
Net weight (kg)	0.03
IP internal	20

Download

Mounting instructions [PDF](#)

Photometric Files

LDT / IES [ZIP](#)

Technical Drawings

2D [ZIP](#)

3D [ZIP](#)

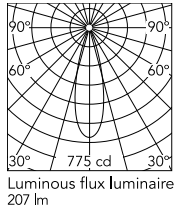
[Bim](#) [ZIP](#)



Ecodesign and Energy Labelling

Replaceable (LED only) light source by a professional

Schematic light drawing



h(m)	E(lx)	D(m)
1	775	0.51
2	194	1.02
3	86	1.54
4	48	2.05
5	31	2.56

Photometric

Lighting type	Direct
Light distribution	Symmetric
CCT (K)	3000
CRI>	90
McAdam steps (SDCM)	2
Beam angle C0-180 (°)	28
Beam angle C90-270 (°)	28
UGR _L	<16

Electrical

Insulation class	III
Forward voltage (V)	24
Power supply	Remote excluded
Dimmable	Yes
Power supply type	Non Dimmable, Dimmable
Dimming interface	Remote Dimmable (Dimmer Not Included)

Accessories & Power Supply



OPTIONAL
Accessory

Optical

08.0190.14

Honeycomb for Micro Spot