

FLOS

03.6806.14A1V Black

Light Supply Adjustable Trim Dimmable

Designed by FLOS Architectural, 2017

LED - LED array - 30.1W - 1698lm - 3000K - CRI> 90 - Beam° 13

Recessed luminaire with LED light source. Remote 220/240V power supply included.



Are you a professional and your project needs consulting and support?

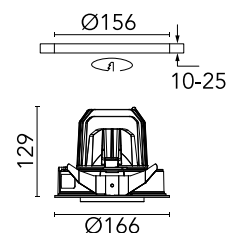
[BOOK AN APPOINTMENT](#)

Main specifications

| | |
|------------------------|---------------------|
| Mounting | Ceiling recessed |
| Environments | Indoor dry location |
| Light source type | LED |
| Light sources included | Yes |
| LED type | LED array |
| Lamp category | LED |
| Number of lamps | 1 |
| Power (W) | 30.1 |
| Source flux (lm) | 2901 |
| Lumen Output (lm) | 1698 |

Physical

| | |
|--------------------------|------------|
| Colour | Black |
| Trim | No |
| Orientation | Adjustable |
| Rotation (°) | 355 |
| Longitudinal tilting (°) | 35 |
| Recessed depth (mm) | 239 |
| Net weight (kg) | 1.01 |
| IP internal | 20 |
| IP external | 23 |



Download

Mounting instructions [↓ PDF](#)

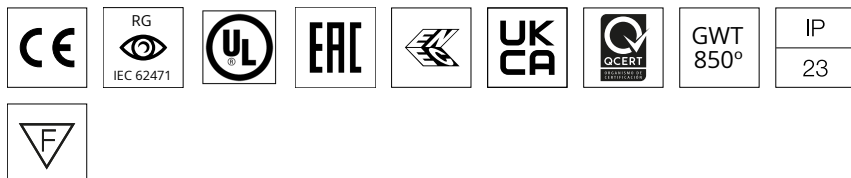
Photometric Files

LDT / IES [↓ ZIP](#)

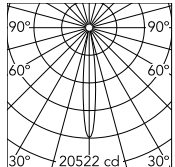
Technical Drawings

2D [↓ ZIP](#)

3D [↓ ZIP](#)



Schematic light drawing



Beam Angle: 13°

| h(m) | E(lx) | D(m) |
|------|-------|------|
| 1 | 20522 | 0.23 |
| 2 | 5131 | 0.46 |
| 3 | 2280 | 0.69 |
| 4 | 1283 | 0.92 |
| 5 | 821 | 1.15 |

Luminous flux luminaire
1698 lm (EXTREME CUT OFF)

Photometric

| | |
|------------------------|-----------|
| Lighting type | Direct |
| Light distribution | Symmetric |
| CCT (K) | 3000 |
| CRI> | 90 |
| Beam angle C0-180 (°) | 13 |
| Beam angle C90-270 (°) | 13 |
| Extreme cut off | No |

Electrical

| | |
|--------------------|-----------------|
| Insulation class | II |
| Frequency (Hz) | 50/60 |
| Main voltage (Vac) | 220-240 |
| Power supply | Remote included |
| Dimmable | Yes |
| Power supply type | Dimmable 1-10V |

Accessories & Power Supply



OPTIONAL
Accessory

08.8118.68

Elliptical lens



OPTIONAL
Accessory

08.8242.14

Screening crosspiece



OPTIONAL
Accessory

08.8377.14

Honeycomb. Big Cells



OPTIONAL
Accessory

08.8453.40

Highly-efficient cylinder



OPTIONAL
Accessory

08.8450.00

Light Supply Adjustable spare
reflector. Spot



OPTIONAL
Accessory

08.8451.00

Light Supply Adjustable spare
reflector. Medium



OPTIONAL
Accessory

08.8452.00

Light Supply Adjustable spare
reflector. Flood