

# FLOS

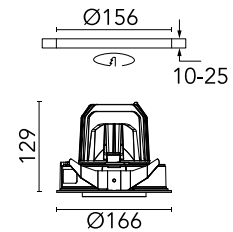
03.6800.14BDA Black

## Light Supply Adjustable Trim Dimmable

Designed by FLOS Architectural, 2017

LED - LED array - 30.1W - 2208lm - 3000K - CRI> 80 - Beam° 13

Recessed luminaire with LED light source. Remote 220/240V power supply included.



Are you a professional and your project needs consulting and support?

[BOOK AN APPOINTMENT](#)

### Main specifications

Mounting	Ceiling recessed
Environments	Indoor dry location
Light source type	LED
Light sources included	Yes
LED type	LED array
Lamp category	LED
Number of lamps	1
Power (W)	30.1
Source flux (lm)	3772
Lumen Output (lm)	2208

### Physical

Colour	Black
Trim	No
Orientation	Adjustable
Rotation (°)	355
Longitudinal tilting (°)	35
Recessed depth (mm)	239
Net weight (kg)	1.01
IP internal	20
IP external	23

### Download

Mounting instructions [↓ PDF](#)

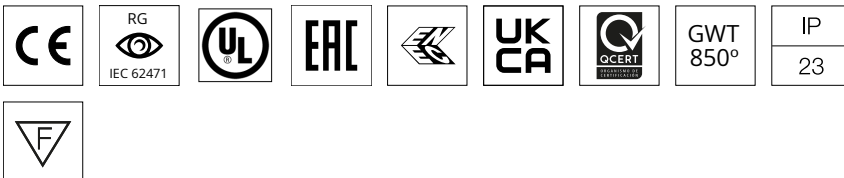
### Photometric Files

LDT / IES [↓ ZIP](#)

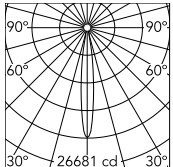
### Technical Drawings

2D [↓ ZIP](#)

3D [↓ ZIP](#)



## Schematic light drawing



Beam Angle: 13°

h(m)	E(lx)	D(m)
1	26681	0.23
2	6670	0.46
3	2965	0.69
4	1668	0.92
5	1067	1.15

Luminous flux luminaire  
2208 lm (EXTREME CUT OFF)

## Photometric

Lighting type	Direct
Light distribution	Symmetric
CCT (K)	3000
CRI>	80
Beam angle C0-180 (°)	13
Beam angle C90-270 (°)	13
Extreme cut off	No

## Electrical

Insulation class	II
Frequency (Hz)	50/60
Main voltage (Vac)	220-240
Power supply	Remote included
Dimmable	Yes
Power supply type	Dimmable DALI 2

## Accessories & Power Supply



OPTIONAL  
Accessory

08.8118.68

Elliptical lens



OPTIONAL  
Accessory

08.8242.14

Screening crosspiece



OPTIONAL  
Accessory

08.8377.14

Honeycomb. Big Cells



OPTIONAL  
Accessory

08.8453.40

Highly-efficient cylinder



OPTIONAL  
Accessory

08.8450.00

Light Supply Adjustable spare  
reflector. Spot



OPTIONAL  
Accessory

08.8451.00

Light Supply Adjustable spare  
reflector. Medium



OPTIONAL  
Accessory

08.8452.00

Light Supply Adjustable spare  
reflector. Flood