

# FLOS

03.6801.14A Black

## Light Supply Adjustable Trim

Designed by FLOS Architectural, 2017

LED - LED array - 30.1W - 1777lm - 3000K - CRI> 80 - Beam° 21

Recessed luminaire with LED light source. Remote 220/240V power supply included.



Are you a professional and your project needs consulting and support?

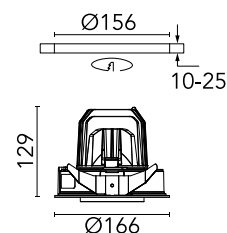
BOOK AN APPOINTMENT

### Main specifications

Mounting	Ceiling recessed
Environments	Indoor dry location
Light source type	LED
Light sources included	Yes
LED type	LED array
Lamp category	LED
Number of lamps	1
Power (W)	30.1
Source flux (lm)	3772
Lumen Output (lm)	1777

### Physical

Colour	Black
Trim	No
Orientation	Adjustable
Rotation (°)	355
Longitudinal tilting (°)	35
Recessed depth (mm)	239
Net weight (kg)	1.01
IP internal	20
IP external	23



### Download

Mounting instructions [↓ PDF](#)

### Photometric Files

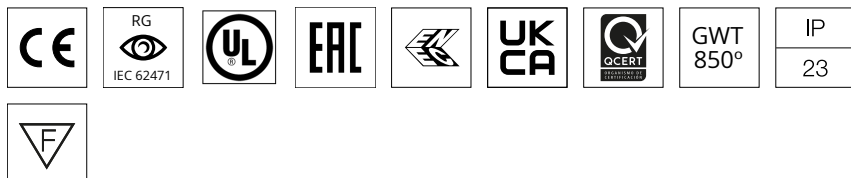
LDT / IES [↓ ZIP](#)

### Technical Drawings

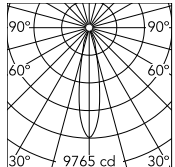
2D [↓ ZIP](#)

3D [↓ ZIP](#)

[Bim](#) [↓ ZIP](#)



## Schematic light drawing



Beam Angle: 21°

h(m)	E(lx)	D(m)
1	9765	0.37
2	2441	0.75
3	1085	1.12
4	610	1.49
5	391	1.87

Luminous flux luminaire  
1777 lm (EXTREME CUT OFF)

## Photometric

Lighting type	Direct
Light distribution	Symmetric
CCT (K)	3000
CRI>	80
Beam angle C0-180 (°)	21
Beam angle C90-270 (°)	21
UGR <sub>L</sub>	<10

## Electrical

Insulation class	II
Frequency (Hz)	50/60
Forward voltage (V)	37.6
Power supply	Remote included
Dimmable	No
Power supply type	Non Dimmable
Emergency	No

## Accessories & Power Supply



OPTIONAL  
Accessory

08.8118.68

Elliptical lens



OPTIONAL  
Accessory

08.8242.14

Screening crosspiece



OPTIONAL  
Accessory

08.8377.14

Honeycomb. Big Cells



OPTIONAL  
Accessory

08.8453.40

Highly-efficient cylinder



OPTIONAL  
Accessory

08.8450.00

Light Supply Adjustable spare  
reflector. Spot



OPTIONAL  
Accessory

08.8451.00

Light Supply Adjustable spare  
reflector. Medium



OPTIONAL  
Accessory

08.8452.00

Light Supply Adjustable spare  
reflector. Flood