

FLOS

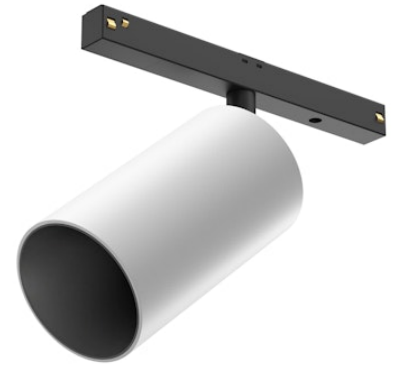
05.9060.40 White

Light Shadow Spot 60 On Board Dimmer

Designed by FLOS Architectural, 2022

10W - 765lm - 2700K - CRI> 90 - Beam° 9

LED accent lighting module for installation in The Tracking Magnet or Infra-Structure systems. For wireless control of luminaires, please select Casambi integrated versions. Accessories available, (honeycomb and CCT dichroic filters).



*installed in The Tracking Magnet

Are you a professional and your project needs consulting and support?

[BOOK AN APPOINTMENT](#)

Main specifications

Mounting	Track
Environments	Indoor dry location
Light source type	LED
Light sources included	Yes
LED type	LED array
Number of lamps	1
Power (W)	10
Source flux (lm)	799
Lumen Output (lm)	765

Physical

Colour	White
Orientation	Adjustable
Rotation (°)	360
Longitudinal tilting (°)	90
Net weight (kg)	0.46
IP internal	20

Download

Mounting instructions [↓ PDF](#)

Photometric Files

LDT / IES [↓ ZIP](#)

Technical Drawings

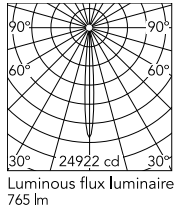
2D [↓ ZIP](#)

3D [↓ ZIP](#)

[🔒 Bim](#) [↓ ZIP](#)



Schematic light drawing



Beam Angle: 9°

h(m)	E(lx)	D(m)
1	24922	0.16
2	6230	0.32
3	2769	0.48
4	1558	0.64
5	997	0.80

Photometric

Lighting type	Direct
Light distribution	Symmetric
CCT (K)	2700
CRI>	90
Rf fidelity index	93
Rg gamut index	99
LED Life / Failure Ratio	L80B50>47.000h_Tc85°C
Beam angle C0-180 (°)	9
Beam angle C90-270 (°)	9
UGR _L	<10

Electrical

Insulation class	III
Forward voltage (V)	48
LED current (mA)	250
Power supply	Remote excluded
Dimmable	No
Power supply type	Non Dimmable

Ecodesign and Energy Labelling

This product contains a light source of energy efficiency class G



Accessories & Power Supply



OPTIONAL
Accessory

08.0175.14

Honeycomb



OPTIONAL
Accessory

08.0176.14

Honeycomb



OPTIONAL
Filter

Optical

08.0796.00

CCT Inceaser Filter D58



OPTIONAL
Filter

Optical

08.0797.00

CCT Decreaser Filter D12



OPTIONAL
Filter

Optical

08.0798.00

CCT Inceaser Filter D58



OPTIONAL
Filter

Optical

08.0799.00

CCT Decreaser Filter D12