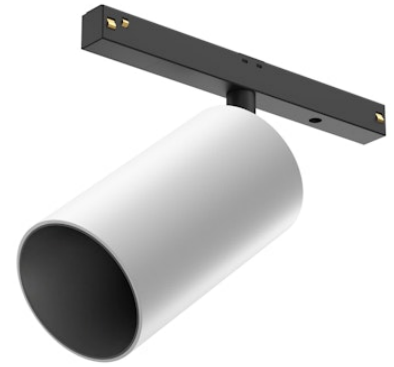


FLOS

05.9067.40.1V White

Light Shadow Spot 60 Dimmable 1-10V

Designed by FLOS Architectural, 2022



20W - 1427lm - 3000K - CRI> 90 - Beam° 26

LED accent lighting module for installation in The Tracking Magnet or Infra-Structure systems. For wireless control of luminaires, please select Casambi integrated versions. Accessories available, (honeycomb and CCT dichroic filters).

Are you a professional and your project needs consulting and support?

[BOOK AN APPOINTMENT](#)

Main specifications

Mounting	Track
Environments	Indoor dry location
Light source type	LED
Light sources included	Yes
LED type	LED array
Number of lamps	1
Power (W)	20
Source flux (lm)	1751
Lumen Output (lm)	1427

Physical

Colour	White
Orientation	Adjustable
Rotation (°)	360
Longitudinal tilting (°)	90
Net weight (kg)	0.46
IP internal	20



*installed in The Tracking Magnet

Download

Mounting instructions [↓ PDF](#)

Photometric Files

LDT / IES [↓ ZIP](#)

Technical Drawings

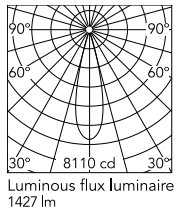
2D [↓ ZIP](#)

3D [↓ ZIP](#)

[Bim](#) [↓ ZIP](#)



Schematic light drawing



Photometric

Lighting type	Direct
Light distribution	Symmetric
CCT (K)	3000
CRI>	90
Rf fidelity index	92
Rg gamut index	100
LED Life / Failure Ratio	L80B50>47.000h_Tc85°C
Beam angle C0-180 (°)	26
Beam angle C90-270 (°)	26
UGR _L	<10

Electrical

Insulation class	III
Forward voltage (V)	48
LED current (mA)	500
Power supply	Remote excluded
Dimmable	Yes
Power supply type	Dimmable 1-10V
Dimming range (%)	10-100

Ecodesign and Energy Labelling

This product contains a light source of energy efficiency class G



Accessories & Power Supply



OPTIONAL
Accessory

08.0175.14

Honeycomb



OPTIONAL
Accessory

08.0176.14

Honeycomb



OPTIONAL
Filter

Optical

08.0796.00

CCT Inceaser Filter D58



OPTIONAL
Filter

Optical

08.0797.00

CCT Decreaser Filter D12



OPTIONAL
Filter

Optical

08.0798.00

CCT Inceaser Filter D58



OPTIONAL
Filter

Optical

08.0799.00

CCT Decreaser Filter D12