

# FLOS

03.9890.14 Black

## Light Shadow Pro Ø 90 Wall-Washer

Designed by FLOS Architectural, 2022

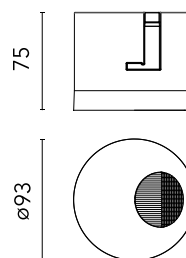


LED - LED array - 18W - 1198lm - 2700K - CRI> 90 - Beam° 23

LED lighting module, with wall washer optic, to be inserted in the recessed frames (not included), installation through a bayonet system with interchangeable spots. Remote driver not included.

Are you a professional and your project needs consulting and support?

BOOK AN APPOINTMENT



### Main specifications

Mounting	Ceiling recessed
Environments	Indoor dry location
Light source type	LED
Light sources included	Yes
LED type	LED array
Lamp category	LED
Number of lamps	1
Power (W)	18
System power (W)	18
Source flux (lm)	1593
Lumen Output (lm)	1198
Efficacy (lm/W)	54

### Physical

Colour	Black
Orientation	Directional
Recessed depth (mm)	139
Spot diameter (mm)	93
Length (mm)	93
Net weight (kg)	0.4
Package height (mm)	19
Package width (mm)	22
Package length (mm)	18
Package volume (m3)	0.01
IP internal	20
IP external	54

### Download

Mounting instructions [↓ PDF](#)

### Photometric Files

LDT / IES [↓ ZIP](#)

### Technical Drawings

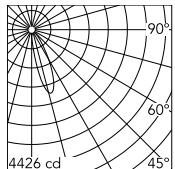
2D [↓ ZIP](#)

3D [↓ ZIP](#)

[Bim](#) [↓ ZIP](#)



## Schematic light drawing



h(m)	E(lx)	D(m)
1	3886	0.47
2	971	0.93
3	432	1.40
4	243	1.86
5	155	2.33

Luminous flux luminaire  
1198 lm

## Photometric

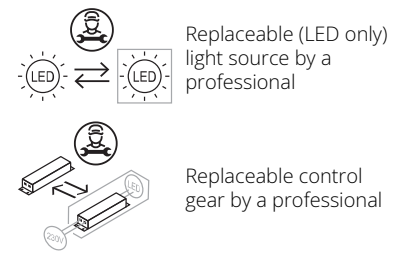
Lighting type	Direct
Light distribution	Asymmetric
CCT (K)	2700
CRI>	90
McAdam steps (SDCM)	2
Rf fidelity index	91
Rg gamut index	100
LED Life / Failure Ratio	L70B40 >50.000h (Tc=85°C)
Beam angle C0-180 (°)	23
UGR <sub>L</sub>	<19

## Electrical

Insulation class	III
Forward voltage (V)	35.9
LED current (mA)	500
Power supply	Remote
Power supply type	Dimmable

## Ecodesign and Energy Labelling

This product contains a light source of energy efficiency class F



## Accessories & Power Supply



REQUIRED  
Power supply

Electrical

60.9162

Continuous current power supply 220/240V - 50/60Hz. Adjustable Current 300mA-13W / 350mA-15W / 400mA-18W / 450mA-20W / 500mA-22W / 550mA-24W / 600mA-27W / 650mA-29W / 700mA-31W / 750mA-32W / 800mA-33W / 850mA-35W / 900mA-38W / 950mA-40W / 1000/1050mA-4...



REQUIRED  
Power supply

Electrical

60.9160

Non dimmable continuous current power supply of 220/240V - 50/60Hz with power current selected through adjustable with switch 200 mA - 8,5W / 250mA - 11W / 300 mA - 13W / 350 mA - 15W / 400 mA - 17,5W / 450 mA - 19,5W / 500 mA - 22W



REQUIRED  
Power supply

Electrical

60.9222

Continuous current power supply of 12-20W, 110/240V - 50/60Hz with power current selected through adjustable 250mA - 12W / 350mA - 17W / 400mA - 19W / 450 / 500/ 550 / 600 / 700mA - 20W regulable Dali 1 & Dali 2



REQUIRED  
Power supply

Electrical

60.9208

Continuous current power supply of 13-20W - Dim 1-10V&Push - 110/240V - 50/60Hz with power current selected through adjustable



REQUIRED  
Power supply

Electrical

60.9843

Continuous current power supply 20W, 220/240V - 50/60Hz with power current selected through adjustable switch. Dimmable 0-10V/PWM/RX. Output current: 500mA - 21W / 450mA - 19W / 400mA - 17W / 350mA - 15W / 300mA - 12W / 250mA - 10W.



REQUIRED  
Power supply

Electrical

60.9387

Continuous current power supply 18W, 100/277V - 50/60Hz with power current selected through adjustable switch. Non Dimmable.



REQUIRED  
Power supply

Electrical

60.7678

Continuous current supply source of 240V - 50/60Hz with dimmable Dali 2, Push dimming. 150mA - 7.8W / 200mA - 10.4W / 250mA - 13W / 300mA - 15.6W / 350mA - 18.2W / 400mA - 20.8W / 500mA - 26W / 600mA - 31.2W / 700mA - 36.4W / 750mA - 39W / 800mA - 41.6...

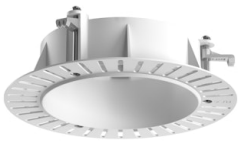


REQUIRED  
Power supply

Electrical

60.7785

Constant current power supply 42W, 220-240V CASAMBI dimmable.



REQUIRED  
Frame

08.0193.00

Installation Frame No Trim Ø90  
Fix



REQUIRED  
Frame

08.0161.14

Installation Frame Trim Ø90 Fix



REQUIRED  
Frame

08.0161.40

Installation Frame Trim Ø90 Fix



REQUIRED  
Power supply

Electrical

60.9467

Mains dimming 20W Constant current power supply, AC phase-cut adjustable, trailing & leading edge dimming, 220/240V - 50/60Hz, with dip-switch programmable power supply current. Output current: 900mA - 20W / 850mA - 20W / 800mA - 20W / 750mA - 20W / 70...