

# FLOS

03.9923.ES Bronze

## Light Shadow Pro Ø 90 Fixed Optic Wide Flood

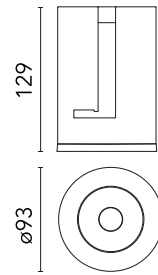
Designed by FLOS Architectural



LED lighting module, with low glare, to be inserted in the recessed frames (not included), installation through a bayonet system with interchangeable spots. Remote driver not included.

Are you a professional and your project needs consulting and support?

BOOK AN APPOINTMENT



### Main specifications

|                        |                     |
|------------------------|---------------------|
| Mounting               | Ceiling recessed    |
| Environments           | Indoor dry location |
| Light source type      | LED                 |
| Light sources included | Yes                 |
| LED type               | LED array           |
| Lamp category          | LED                 |
| Number of lamps        | 1                   |
| Power (W)              | 22                  |
| Source flux (lm)       | 2457                |
| Lumen Output (lm)      | 1890                |

### Physical

|                     |        |
|---------------------|--------|
| Colour              | Bronze |
| Orientation         | Fixed  |
| Recessed depth (mm) | 139    |
| Spot diameter (mm)  | 90     |
| Net weight (kg)     | 0.22   |
| Package width (mm)  | 18     |
| Package length (mm) | 22     |
| IP internal         | 20     |
| IP external         | 54     |

### Download

Mounting instructions [↓ PDF](#)

### Photometric Files

LDT / IES [↓ ZIP](#)

### Technical Drawings

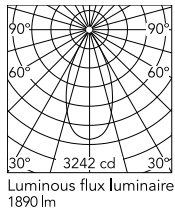
2D [↓ ZIP](#)

3D [↓ ZIP](#)

[Bim](#) [↓ ZIP](#)



## Schematic light drawing



| h(m) | E(lx) | D(m) |
|------|-------|------|
| 1    | 3242  | 0.88 |
| 2    | 811   | 1.75 |
| 3    | 361   | 2.63 |
| 4    | 202   | 3.50 |
| 5    | 130   | 4.38 |

## Photometric

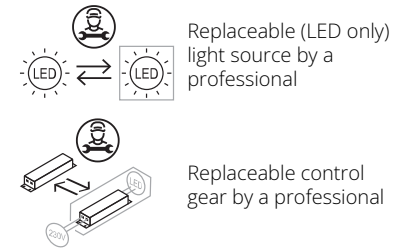
|                          |                              |
|--------------------------|------------------------------|
| Lighting type            | Direct                       |
| Light distribution       | Symmetric                    |
| CCT (K)                  | 4000                         |
| CRI>                     | 90                           |
| McAdam steps (SDCM)      | 2                            |
| LED Life / Failure Ratio | L70B40 >50.000h<br>(Tc=85°C) |
| Beam angle C0-180 (°)    | 47                           |
| Beam angle C90-270 (°)   | 47                           |
| UGR <sub>L</sub>         | <16                          |

## Electrical

|                     |   |
|---------------------|---|
| Insulation class    | III   |
| Forward voltage (V) | 35.8  |
| LED current (mA)    | 600   |
| Power supply        | Remote excluded   |
| Dimmable            | Yes   |
| Power supply type   | Non Dimmable,<br>Dimmable Casambi,<br>Mains Cut Dimming,<br>Dimmable DALI 2,<br>Dimmable, Dimmable<br>1-10V, Dimmable DALI<br>1 |

## Ecodesign and Energy

### Labelling



## Notes

Please select 500 mA setting in the remote driver to match the power of the Adjustable version.

## Accessories & Power Supply



REQUIRED  
Power supply

Electrical

60.9439

Continuous current power supply, 0/1-10V dimmable, 220/240V - 50/60Hz, 300mA-16W / 350mA-18W / 400mA-21W / 500mA-27W / 600mA-32W / 650mA-35W / 700 / 750 / 800 / 900 / 950 / 1000 / 1050mA-36W

REQUIRED  
Power supply

Electrical

60.8533

Continuous current power supply of 25W, 110/240V - 50/60Hz with power current selected through adjustable 350 mA-18W / 400 mA - 21W / 500mA - 25W / 600mA - 30W / 700/750/900 mA - 32W switch. 1-10V or push dimming, synchronisation cables not included.

REQUIRED  
Frame

Installation

08.0161.ES

Installation Frame Trim Ø90 Fix

REQUIRED  
Power supply

Electrical

60.9162

Continuous current power supply 220/240V - 50/60Hz. Adjustable Current 300mA-13W / 350mA-15W / 400mA-18W / 450mA-20W / 500mA-22W / 550mA-24W / 600mA-27W / 650mA-29W / 700mA-31W / 750mA-32W / 800mA-33W / 850mA-35W / 900mA-38W / 950mA-40W / 1000/1050mA-4...



REQUIRED  
Power supply

Electrical

60.9188

Continuous current power supply of 13-20W, 110\*/240V - 50/60Hz with current selected through adjustable 200 mA - 13W / 300 mA - 15W / 350 mA - 18W / 400 / 450 / 500 / 550 / 600 / 650 / 700 / 750 / 800 / 850 / 900 mA - 20W. switch. 0/1-10V or push.

REQUIRED  
Power supply

Electrical

60.9207

Casambi continuous current power supply, dimmable 220/240V - 50/60Hz, 300mA - 16W / 350mA - 18,5W / 400mA - 21,5W / 450 mA - 24W / 500mA - 27W / 600mA - 32W / 650 mA - 35W / 700 mA - 36W / 750 / 800 / 900 / 1000 / 1050 / 1200 mA - 38W.

REQUIRED  
Power supply

Electrical

60.9523

Non dimmable continuous current power supply of 24W, 110/277V - 50/60Hz, with power current selected through adjustable 500 mA/600 mA switch

REQUIRED  
Power supply

Electrical

60.9467

Mains dimming 20W Constant current power supply, AC phase-cut adjustable, trailing & leading edge dimming, 220/240V - 50/60Hz, with dip-switch programmable power supply current. Output current: 900mA - 20W / 850mA - 20W / 800mA - 20W / 750mA - 20W / 70...



REQUIRED  
Power supply

Electrical

60.9692

30W, 220-240V - 50/60Hz  
Constant current power supply,  
with dip-switch programmable  
power supply current.

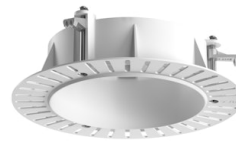


REQUIRED  
Power supply

Electrical

60.7678

Continuous current supply source  
of 240V - 50/60Hz with dimmable  
Dali 2, Push dimming. 150mA -  
7.8W / 200mA - 10.4W / 250mA -  
13W / 300mA - 15.6W / 350mA -  
18.2W / 400mA - 20.8W / 500mA -  
26W / 600mA - 31.2W / 700mA -  
36.4W / 750mA - 39W / 800mA -  
41.6...



REQUIRED  
Frame

08.0193.00

Installation Frame No Trim Ø90  
Fix



OPTIONAL  
Accessory

Mounting

08.0826.00

Orientation Toolkit