

FLOS

03.9960.14.QS Black

Light Shadow Pro Ø 90 Fixed Optic Spot- Non IC - Quick Ship

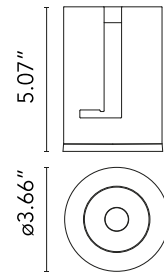
Designed by FLOS Architectural, 2020



LED lighting module, with low glare, to be inserted in the recessed frames (not included), installation through a bayonet system with interchangeable spots. Remote driver not included.

Are you a professional and your project needs consulting and support?

[BOOK AN APPOINTMENT](#)



Main specifications

| | |
|------------------------|---------------------|
| Mounting | Ceiling recessed |
| Environments | Indoor dry location |
| Light Source Type | LED |
| Light sources included | Yes |
| LED type | LED array |
| Lamp category | LED |
| Number of lamps | 1 |
| Power (W) | 21.5 |
| Source flux (lm) | 2191 |
| System flux (lm) | 1817 |

Physical

| | |
|---------------------|-------|
| Color | Black |
| Orientation | Fixed |
| Length (in) | 3.55 |
| Net weight (lb) | 0.53 |
| Package height (in) | 6.19 |
| Package width (in) | 8.27 |
| Package length (in) | 5.32 |
| Package volume (in) | 62 |
| IP internal | 20 |
| IP external | 54 |

Download

[Family spec sheet](#)  ZIP

[Mounting instructions](#)  PDF

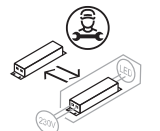

Photometric Files

[LDT / IES](#)  ZIP

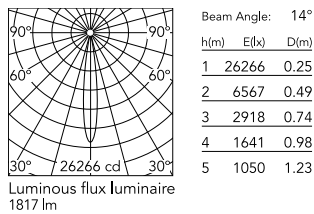


Ecodesign and Energy Labelling

  Replaceable (LED only) light source by a professional

  Replaceable control gear by a professional

Schematic light drawing



Photometric

| | |
|--------------------------|---------------------------|
| Lighting type | Direct |
| Light distribution | Symmetric |
| CCT (K) | 2700 |
| CRI> | 90 |
| McAdam steps (SDCM) | 2 |
| LED Life / Failure Ratio | L70B40 >50.000h (Tc=85°C) |
| Beam angle C0-180 (°) | 14 |
| Beam angle C90-270 (°) | 14 |
| Extreme cut off | No |
| UGR _L | <16 |

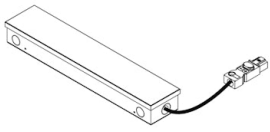
Electrical

| | |
|---------------------|---------------------------------------|
| Forward voltage (V) | 35.8 |
| LED current (mA) | 600 |
| Driver | Remote excluded |
| Dimmable | Yes |
| Dimming interface | Remote Dimmable (Dimmer Not Included) |

Notes

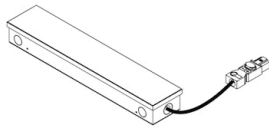
Please select 500 mA setting in the remote driver to match the power of the Adjustable version.

Accessories & Power Supply



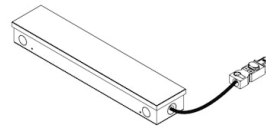
REQUIRED
Power supply

SP30W600MA-ELV-U02
Splice Box 9" L x 2.5" W x 1.5" H ,
600mA , 30W, ELV Dimmable,
Thermal 120V



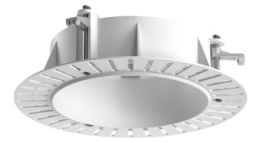
REQUIRED
Power supply

Electrical
SP40W600MA-120-A01
Splice Box UL 9" L x 2.5" W x 1.5"
H, With Driver Programmed to
600mA , 40W, 0-10V Dimmable,
Thermal 120V



REQUIRED
Power supply

Electrical
SP40W600MA-277-A01
Splice Box UL 9" L x 2.5" W x 1.5"
H, With Driver Programmed to
600mA , 40W, 0-10V Dimmable,
Thermal 277V



REQUIRED
Frame

08.0193.00
Installation Frame No Trim Ø90
Fix



REQUIRED
Frame

08.0161.14
Installation Frame Trim Ø90 Fix



REQUIRED
Frame

08.0161.40
Installation Frame Trim Ø90 Fix