

FLOS

03.9960.14.UQ Black

Light Shadow Pro Ø 90 Fixed Optic Spot - Non IC

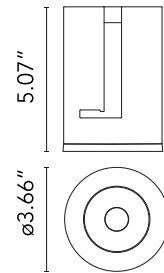
Designed by FLOS Architectural



LED lighting module, with low glare, to be inserted in the recessed frames (not included), installation through a bayonet system with interchangeable spots. Remote driver not included.

Are you a professional and your project needs consulting and support?

[BOOK AN APPOINTMENT](#)



Main specifications

| | |
|------------------------|---------------------|
| Mounting | Ceiling recessed |
| Environments | Indoor dry location |
| Light Source Type | LED |
| Light sources included | Yes |
| LED type | LED array |
| Lamp category | LED |
| Number of lamps | 1 |
| Power (W) | 21.5 |
| Source flux (lm) | -9 |
| System flux (lm) | 1802 |

Physical

| | |
|---------------------|--------|
| Color | Black |
| Orientation | Fixed |
| Net weight (lb) | 0.49 |
| Package volume (in) | 427.14 |
| IP internal | 54 |

Download

[Family spec sheet](#) ZIP

[Mounting instructions](#) PDF

Photometric Files

[LDT / IES](#) ZIP

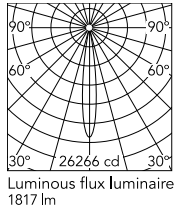


Ecodesign and Energy Labelling

Replaceable (LED only) light source by a professional

Replaceable control gear by a professional

Schematic light drawing



| h(m) | E(lx) | D(m) |
|------|-------|------|
| 1 | 26266 | 0.25 |
| 2 | 6567 | 0.49 |
| 3 | 2918 | 0.74 |
| 4 | 1641 | 0.98 |
| 5 | 1050 | 1.23 |

Photometric

| | |
|--------------------------|---------------------------|
| Lighting type | Direct |
| Light distribution | Symmetric |
| CCT (K) | 2700 |
| CRI> | 90 |
| McAdam steps (SDCM) | 2 |
| LED Life / Failure Ratio | L70B40 >50.000h (Tc=85°C) |
| Beam angle C0-180 (°) | 14 |
| Beam angle C90-270 (°) | 14 |
| Extreme cut off | No |
| UGR _L | <16 |

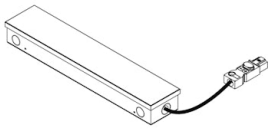
Electrical

| | |
|---------------------|---------------------------------------|
| Forward voltage (V) | 36 |
| LED current (mA) | 600 |
| Driver | Attached Splice Box |
| Dimmable | Yes |
| Dimming type | Dimmable |
| Dimming interface | Remote Dimmable (Dimmer Not Included) |

Notes

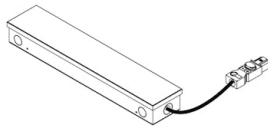
Class 2 Listed.

Accessories & Power Supply



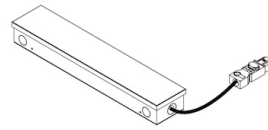
REQUIRED
Power supply

SP30W400MA-ELV-U01
Splice Box 7"x2.22"x1.25", 400mA
, 30W, ELV Dimmable, Thermal
120V



REQUIRED
Power supply

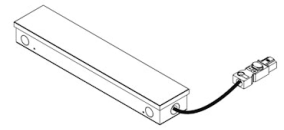
SP30W600MA-ELV-U02
Splice Box 9" L x 2.5" W x 1.5" H,
600mA, 30W, ELV Dimmable,
Thermal 120V



REQUIRED
Power supply

Electrical

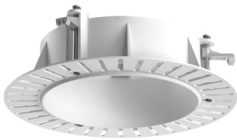
SP40W600MA-120-A01
Splice Box UL 9" L x 2.5" W x 1.5"
H, With Driver Programmed to
600mA, 40W, 0-10V Dimmable,
Thermal 120V



REQUIRED
Power supply

Electrical

SP40W600MA-277-A01
Splice Box UL 9" L x 2.5" W x 1.5"
H, With Driver Programmed to
600mA, 40W, 0-10V Dimmable,
Thermal 277V



REQUIRED
Frame

08.0193.00
Installation Frame No Trim Ø90
Fix



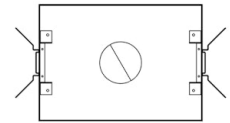
REQUIRED
Frame

08.0161.14
Installation Frame Trim Ø90 Fix



REQUIRED
Frame

08.0161.40
Installation Frame Trim Ø90 Fix



OPTIONAL
Housing and Hanger Bar

TRAY-0016
Registration Tray - non electrical,
place holder for non IC new
construction Round, Ø4"