

FLOS

03.9922.ER Steel

Light Shadow Pro Ø 90 Fixed Optic Flood

Designed by FLOS Architectural



LED lighting module, with low glare, to be inserted in the recessed frames (not included), installation through a bayonet system with interchangeable spots. Remote driver not included.

Are you a professional and your project needs consulting and support?

[BOOK AN APPOINTMENT](#)



Main specifications

Mounting	Ceiling recessed
Environments	Indoor dry location
Light source type	LED
Light sources included	Yes
LED type	LED array
Lamp category	LED
Number of lamps	1
Power (W)	22
Source flux (lm)	2457
Lumen Output (lm)	1971

Physical

Colour	Steel
Orientation	Fixed
Recessed depth (mm)	139
Spot diameter (mm)	90
Net weight (kg)	0.22
Package width (mm)	18
Package length (mm)	22
IP internal	20
IP external	54

Download

Mounting instructions [↓ PDF](#)

Photometric Files

LDT / IES [↓ ZIP](#)

Technical Drawings

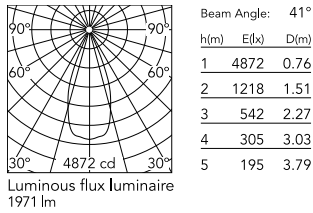
2D [↓ ZIP](#)

3D [↓ ZIP](#)

[Bim](#) [↓ ZIP](#)



Schematic light drawing



Photometric

Lighting type	Direct
Light distribution	Symmetric
CCT (K)	4000
CRI>	90
McAdam steps (SDCM)	2
LED Life / Failure Ratio	L70B40 >50.000h (Tc=85°C)
Beam angle C0-180 (°)	41
Beam angle C90-270 (°)	41
UGR _L	<10

Electrical

Insulation class	III
Forward voltage (V)	35.8
LED current (mA)	600
Power supply	Remote excluded
Dimmable	Yes
Power supply type	Non Dimmable, Dimmable Casambi, Mains Cut Dimming, Dimmable DALI 2, Dimmable, Dimmable 1-10V, Dimmable DALI 1

Ecodesign and Energy

Labelling



Notes

Please select 500 mA setting in the remote driver to match the power of the Adjustable version.

Accessories & Power Supply



REQUIRED
Power supply

Electrical

60.9207

Casambi continuous current power supply, dimmable 220/240V - 50/60Hz, 300mA - 16W / 350mA - 18,5W / 400mA - 21,5W / 450 mA - 24W / 500mA - 27W / 600mA - 32W / 650 mA - 35W / 700 mA - 36W /750 /800 /900 /1000 /1050 /1200 mA - 38W.

REQUIRED
Power supply

Electrical

60.8533

Continuous current power supply of 25W, 110/240V - 50/60Hz with power current selected through adjustable 350 mA-18W / 400 mA - 21W / 500mA - 25W /600mA - 30W /700/750/900 mA - 32W switch. 1-10V or push dimming, synchronisation cables not included.

REQUIRED
Frame

Installation

08.0161.ER

Installation Frame Trim Ø90 Fix

REQUIRED
Power supply

Electrical

60.9162

Continuous current power supply 220/240V - 50/60Hz. Adjustable Current 300mA-13W / 350mA-15W / 400mA-18W / 450mA-20W / 500mA-22W / 550mA-24W / 600mA-27W / 650mA-29W / 700mA-31W / 750mA-32W / 800mA-33W / 850mA-35W / 900mA-38W / 950mA-40W / 1000/1050mA-4...



REQUIRED
Power supply

Electrical

60.9188

Continuous current power supply of 13-20W, 110*/240V - 50/60Hz with current selected through adjustable 200 mA - 13W / 300 mA - 15W / 350 mA - 18W / 400 / 450 / 500 / 550 / 600 / 650 / 700 / 750 / 800 / 850 / 900 mA - 20W. switch. 0/1-10V or push.

REQUIRED
Power supply

Electrical

60.9439

Continuous current power supply, 0/1-10V dimmable, 220/240V - 50/60Hz, 300mA-16W / 350mA-18W / 400mA-21W / 500mA-27W / 600mA-32W / 650mA-35W /700 /750 /800 /900/ 950/ 1000 /1050mA-36W

REQUIRED
Power supply

Electrical

60.9523

Non dimmable continuous current power supply of 24W, 110/277V - 50/60Hz, with power current selected through adjustable 500 mA/600 mA switch

REQUIRED
Power supply

Electrical

60.9467

Mains dimming 20W Constant current power supply, AC phase-cut adjustable, trailing & leading edge dimming, 220/240V - 50/60Hz, with dip-switch programmable power supply current. Output current: 900mA - 20W / 850mA - 20W / 800mA - 20W / 750mA - 20W / 70...



REQUIRED
Power supply

Electrical

60.9692

30W, 220-240V - 50/60Hz
Constant current power supply,
with dip-switch programmable
power supply current.

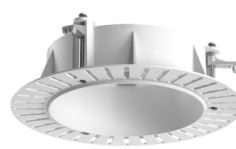


REQUIRED
Power supply

Electrical

60.7678

Continuous current supply source
of 240V - 50/60Hz with dimmable
Dali 2, Push dimming. 150mA -
7.8W / 200mA - 10.4W / 250mA -
13W / 300mA - 15.6W / 350mA -
18.2W / 400mA - 20.8W / 500mA -
26W / 600mA - 31.2W / 700mA -
36.4W / 750mA - 39W / 800mA -
41.6...



REQUIRED
Frame

08.0193.00

Installation Frame No Trim Ø90
Fix



OPTIONAL
Accessory

Mounting

08.0826.00

Orientation Toolkit