

FLOS

03.9981.ER.UQ Steel

Light Shadow Pro Ø 90 Adjustable Optic Spot - Non IC NEW

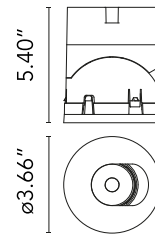
Designed by FLOS Architectural



LED lighting module, with low glare, to be inserted in the recessed frames (not included), installation through a bayonet system with interchangeable spots. Remote driver not included.

Are you a professional and your project needs consulting and support?

[BOOK AN APPOINTMENT](#)



Main specifications

Mounting	Ceiling recessed
Environments	Indoor dry location
Light Source Type	LED
Light sources included	Yes
LED type	LED array
Lamp category	LED
Number of lamps	1
Power (W)	14.8
Source flux (lm)	1100
System flux (lm)	1175

Physical

Color	Steel
Orientation	Adjustable
Rotation (°)	355
Longitudinal tilting (°)	35
Transversal tilting (°)	35
Net weight (lb)	0.49
Package volume (in)	244.08
IP internal	20

Download

Family spec sheet [↓ ZIP](#)
Mounting instructions [↓ PDF](#)


Photometric Files

LDT / IES [↓ ZIP](#)

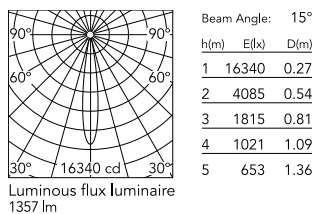


Ecodesign and Energy Labelling

 Replaceable (LED only) light source by a professional

 Replaceable control gear by a professional

Schematic light drawing



Photometric

Lighting type	Direct
Light distribution	Symmetric
CCT (K)	2700
CRI>	90
McAdam steps (SDCM)	2
LED Life / Failure Ratio	L70B40 >50.000h (Tc=85°C)
Beam angle C0-180 (°)	15
Beam angle C90-270 (°)	15
UGR _L	<16

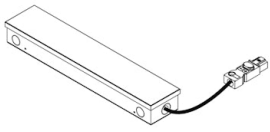
Electrical

Forward voltage (V)	38.5
LED current (mA)	400
Driver	Attached Splice Box
Dimmable	Yes
Dimming type	Dimmable
Dimming interface	Remote Dimmable (Dimmer Not Included)

Notes

Class 2 Listed.

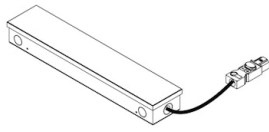
Accessories & Power Supply



REQUIRED
Power supply

SP30W400MA-120-U01

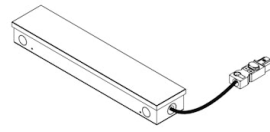
Splice Box 7"x2.22"x1.25", 400mA ,
30W, 0-10V Dimmable, Thermal
120V



REQUIRED
Power supply

SP30W400MA-277-U01

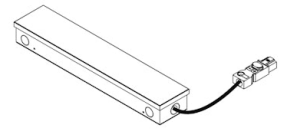
Splice Box 7"x2.22"x1.25", 400mA ,
30W, 0-10V Dimmable, Thermal
277V



REQUIRED
Power supply

SP30W400MA-ELV-U01

Splice Box 7"x2.22"x1.25", 400mA
, 30W, ELV Dimmable, Thermal
120V

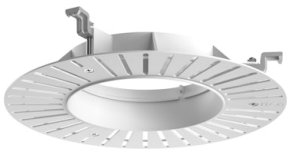


REQUIRED
Power supply

Electrical

06.0319.00.90

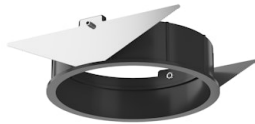
Splice Box UL 120V 700mA 1-10V



REQUIRED
Frame

08.0167.00

Installation Frame No Trim Ø90



REQUIRED
Frame

08.0165.14

Installation Frame Trim Ø90

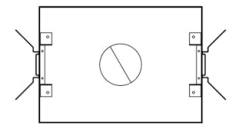


OPTIONAL
Accessory

Mounting

08.0826.00

Orientation Toolkit



OPTIONAL
Housing and Hanger Bar

TRAY-0016

Registration Tray - non electrical,
place holder for non IC new
construction Round, Ø4"