

FLOS

03.9982.ES Bronze

Light Shadow Pro Ø 90 Adjustable Optic Medium

Designed by FLOS Architectural

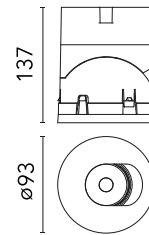


LED - LED array - 18W - 1301lm - 2700K - CRI> 90 - Beam° 23

LED lighting module, with low glare, to be inserted in the recessed frames (not included), installation through a bayonet system with interchangeable spots. Remote driver not included.

Are you a professional and your project needs consulting and support?

[BOOK AN APPOINTMENT](#)



Main specifications

Mounting	Ceiling recessed
Environments	Indoor dry location
Light source type	LED
Light sources included	Yes
LED type	LED array
Lamp category	LED
Number of lamps	1
Power (W)	18
Source flux (lm)	1637
Lumen Output (lm)	1301

Physical

Colour	Bronze
Orientation	Adjustable
Rotation (°)	355
Longitudinal tilting (°)	35
Transversal tilting (°)	35
Recessed depth (mm)	149
Spot diameter (mm)	93
Net weight (kg)	0.22
Package width (mm)	14
Package length (mm)	21
IP internal	20
IP external	20

Download

[Mounting instructions](#)  PDF

Photometric Files

[LDT / IES](#)  ZIP

Technical Drawings

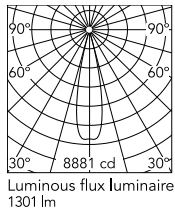
[2D](#)  ZIP

[3D](#)  ZIP

[Bim](#)  ZIP



Schematic light drawing



h(m)	E(lx)	D(m)
1	8881	0.42
2	2220	0.83
3	987	1.25
4	555	1.66
5	355	2.08

Photometric

Lighting type	Direct
Light distribution	Symmetric
CCT (K)	2700
CRI>	90
McAdam steps (SDCM)	2
LED Life / Failure Ratio	L70B40 >50.000h (Tc=85°C)
Beam angle C0-180 (°)	23
Beam angle C90-270 (°)	23
UGR _L	<10

Electrical

Insulation class	III
Forward voltage (V)	35.9
LED current (mA)	500
Power supply	Remote excluded
Dimmable	Yes
Power supply type	Non Dimmable, Dimmable DALI 2, Dimmable, Dimmable Casambi, Dimmable 1-10V, Dimmable DALI 1, Mains Cut Dimming

Ecodesign and Energy

Labelling





REQUIRED
Power supply

Electrical

60.9162

Continuous current power supply 220/240V - 50/60Hz. Adjustable Current 300mA-13W / 350mA-15W / 400mA-18W / 450mA-20W / 500mA-22W / 550mA-24W / 600mA-27W / 650mA-29W / 700mA-31W / 750mA-32W / 800mA-33W / 850mA-35W / 900mA-38W / 950mA-40W / 1000/1050mA-4...



REQUIRED
Power supply

Electrical

60.9188

Continuous current power supply of 13-20W, 110*/240V - 50/60Hz with current selected through adjustable 200 mA - 13W / 300 mA - 15W / 350 mA - 18W / 400 / 450 / 500 / 550 / 600 / 650 / 700 / 750 / 800 / 850 / 900 mA - 20W. switch. 0/1-10V or push.



REQUIRED
Power supply

Electrical

60.9439

Continuous current power supply, 0/1-10V dimmable, 220/240V - 50/60Hz, 300mA-16W / 350mA-18W / 400mA-21W / 500mA-27W / 600mA-32W / 650mA-35W / 700 / 750 / 800 / 900 / 950 / 1000 / 1050mA-36W



REQUIRED
Power supply

Electrical

60.7678

Continuous current supply source of 240V - 50/60Hz with dimmable Dali 2, Push dimming. 150mA - 7.8W / 200mA - 10.4W / 250mA - 13W / 300mA - 15.6W / 350mA - 18.2W / 400mA - 20.8W / 500mA - 26W / 600mA - 31.2W / 700mA - 36.4W / 750mA - 39W / 800mA - 41.6...

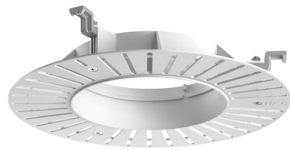


REQUIRED
Power supply

Electrical

60.9207

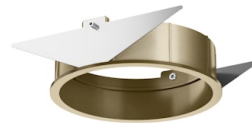
Casambi continuous current power supply, dimmable 220/240V - 50/60Hz, 300mA - 16W / 350mA - 18,5W / 400mA - 21,5W / 450 mA - 24W / 500mA - 27W / 600mA - 32W / 650 mA - 35W / 700 mA - 36W / 750 / 800 / 900 / 1000 / 1050 / 1200 mA - 38W.



REQUIRED
Frame

08.0167.00

Installation Frame No Trim Ø90



REQUIRED
Frame

Installation

08.0165.ES

Installation Frame Trim Ø90



REQUIRED
Power supply

Electrical

60.9467

Mains dimming 20W Constant current power supply, AC phase-cut adjustable, trailing & leading edge dimming, 220/240V - 50/60Hz, with dip-switch programmable power supply current. Output current: 900mA - 20W / 850mA - 20W / 800mA - 20W / 750mA - 20W / 70...