

FLOS

03.9971.14AUQ Black

Light Shadow Pro Ø 60 Adjustable Optic Spot - Non IC NEW

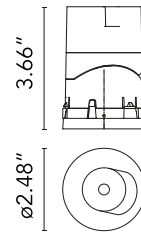
Designed by FLOS Architectural, 2020



LED lighting module, with low glare, to be inserted in the recessed frames (not included), installation through a bayonet system with interchangeable spots. Remote driver not included.

Are you a professional and your project needs consulting and support?

[BOOK AN APPOINTMENT](#)



Main specifications

Mounting	Ceiling recessed
Environments	Indoor dry location
Light Source Type	LED
Light sources included	Yes
LED type	LED array
Lamp category	LED
Number of lamps	1
Power (W)	8.8
Source flux (lm)	750
System flux (lm)	663

Physical

Color	Black
Orientation	Adjustable
Rotation (°)	355
Longitudinal tilting (°)	30
Transversal tilting (°)	30
Net weight (lb)	0.49
Package height (in)	6.19
Package width (in)	8.27
Package length (in)	5.32
Package volume (in)	244.08
IP internal	20

Download

[Family spec sheet](#)  ZIP



[Mounting instructions](#)  PDF

Photometric Files

[LDT / IES](#)  ZIP

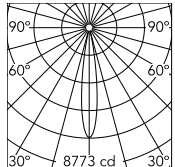
Ecodesign and Energy Labelling

   Replaceable (LED only) light source by a professional

  Replaceable control gear by a professional



Schematic light drawing



Beam Angle: 16°

h(m)	E(lx)	D(m)
1	8773	0.28
2	2193	0.55
3	975	0.83
4	548	1.10
5	351	1.38

Luminous flux luminaire
715 lm

Photometric

Lighting type	Direct
Light distribution	Symmetric
CCT (K)	2700
CRI>	90
Rf fidelity index	93
Rg gamut index	99
LED Life / Failure Ratio	L80B50>50.000h (Tc=85°C)
Beam angle C0-180 (°)	16
Beam angle C90-270 (°)	16
UGR _L	<10

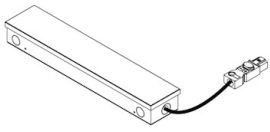
Electrical

Forward voltage (V)	18.5
LED current (mA)	700
Driver	Attached Splice Box
Dimmable	Yes
Dimming interface	Remote Dimmable (Dimmer Not Included)

Notes

Class 2 Listed.

Accessories & Power Supply



REQUIRED
Power supply

Electrical

06.0319.00.90

Splice Box UL 120V 700mA 1-10V



REQUIRED
Frame

08.0166.00

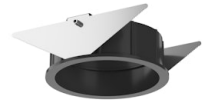
Installation Frame No Trim Ø60



REQUIRED
Frame

08.0164.40

Installation Frame Trim Ø60



REQUIRED
Frame

08.0164.14

Installation Frame Trim Ø60

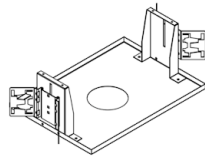


OPTIONAL
Accessory

Mounting

08.0825.00

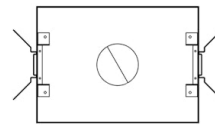
Orientation Toolkit



OPTIONAL
Housing and Hanger Bar

TRAY-0019

Registration Tray - non electrical,
place holder for non IC new
construction, Ø4.75"



OPTIONAL
Housing and Hanger Bar

TRAY-0001

Registration Tray - non electrical,
place holder for non IC new
construction, Ø2.95"