

FLOS

03.9972.ESA98 Bronze

Light Shadow Pro Ø 60 Adjustable Optic Medium - Airtight IC Rated - JA8 NEW

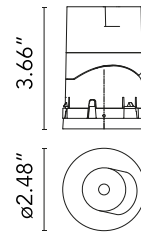
Designed by FLOS Architectural, 2022



LED lighting module, with low glare, to be inserted in the recessed frames (not included), installation through a bayonet system with interchangeable spots. Remote driver not included.

Are you a professional and your project needs consulting and support?

[BOOK AN APPOINTMENT](#)



Main specifications

Mounting	Ceiling recessed
Environments	Indoor dry location
Light Source Type	LED
Light sources included	Yes
LED type	LED array
Lamp category	LED
Number of lamps	1
Power (W)	8.8
Source flux (lm)	816
System flux (lm)	659
Efficacy (lm/W)	57.3

Physical

Color	Bronze
Orientation	Adjustable
Rotation (°)	355
Longitudinal tilting (°)	35
Transversal tilting (°)	35
Recessed depth (in)	7
Net weight (lb)	0.49
Package volume (in)	245
IP internal	20

Download

[Family spec sheet](#)  ZIP

[Mounting instructions](#)  PDF

Photometric Files

[LDT / IES](#)  ZIP

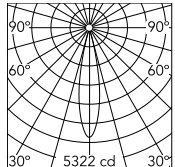
Technical Drawings

[2D](#)  ZIP

[3D](#)  ZIP



Schematic light drawing



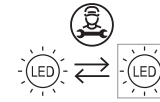
Beam Angle: 21°

h(m)	E(lx)	D(m)
1	5322	0.37
2	1331	0.74
3	591	1.11
4	333	1.48
5	213	1.85

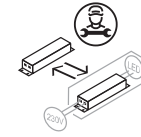
Luminous flux luminaire
659 lm (EXTREME CUT OFF)

Ecodesign and Energy

Labelling



Replaceable (LED only)
light source by a
professional



Replaceable control
gear by a professional

Photometric

Lighting type	Direct
Light distribution	Symmetric
CCT (K)	2700
CRI>	90
McAdam steps (SDCM)	2
Rf fidelity index	93
Rg gamut index	99
LED Life / Failure Ratio	L70B40 > 50.000h (Tc=85°C)
Beam angle C0-180 (°)	21
Beam angle C90-270 (°)	21
Extreme cut off	No
UGR _L	<10

Electrical

Frequency (Hz)	50/60
Forward voltage (V)	12.6
LED current (mA)	700
Driver	Remote from housing
Dimmable	Yes
Dimming type	Lutron EcoSystem, Dimmable ELV, Dimmable 0-10V
Dimming interface	Remote Dimmable (Dimmer Not Included)

Notes

Class 2

Accessories & Power Supply

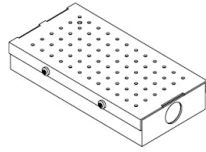


REQUIRED
Accessory

Mounting

08.0825.00

Orientation Toolkit

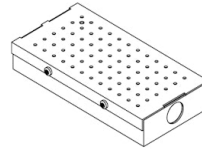


REQUIRED
Power supply

Electrical

SP20W700MA-PEQ-S01

Lutron EcoSystem Splice Box UL
500mA, 20W, 0.1% dim, 120-277V

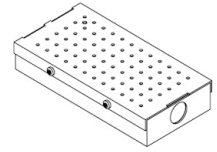


REQUIRED
Power supply

Electrical

SP25W700MA-10V-A01

Splice Box UL 700mA , 25W, 0-
10V Dimmable, 120-277V



REQUIRED
Power supply

Electrical

SP15W700MA-VAR-U01

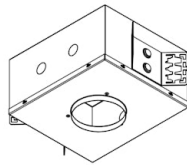
ERP ESS015W-0700-18 12.6W,
700mA, 10-1VDC, Tri mode dim



REQUIRED
Housing and Hanger Bar

08.1201.00.UL

Bar Hanger Set , Male-Female (set
of 2)

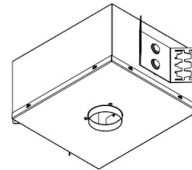


REQUIRED
Housing and Hanger Bar

Installation

08.7073.00.90

Light Shadow PRO 60 Adjustable
Trimless & 90 Fixed Trimless
Airtight Housing for New
construction, Remote Driver see
dimnable driver options below.
CCEA Chicago Plenum



REQUIRED
Housing and Hanger Bar

Installation

08.7070.00A90

Light Shadow PRO 60 Fixed Trim
& 90 Adjustable Trim Airtight
Housing for New construction,
Remote Driver, see dimnable
driver options below for . CCEA
Chicago Plenum



REQUIRED
Frame

08.0166.00

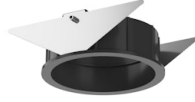
Installation Frame No Trim Ø60



REQUIRED
Frame

08.0164.40

Installation Frame Trim Ø60



REQUIRED
Frame

08.0164.14

Installation Frame Trim Ø60