

# FLOS

03.9972.14A98 Black

## Light Shadow Pro Ø 60 Adjustable Optic Medium - Airtight IC Rated - JA8 NEW

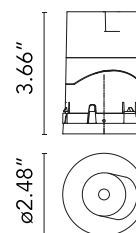
Designed by FLOS Architectural, 2020



LED lighting module, with low glare, to be inserted in the recessed frames (not included), installation through a bayonet system with interchangeable spots. Remote driver not included.

Are you a professional and your project needs consulting and support?

[BOOK AN APPOINTMENT](#)



### Main specifications

Mounting	Ceiling recessed
Environments	Indoor dry location
Light Source Type	LED
Light sources included	Yes
LED type	LED array
Lamp category	LED
Number of lamps	1
Power (W)	8.8
Source flux (lm)	816
System flux (lm)	659
Efficacy (lm/W)	57.3

### Physical

Color	Black
Orientation	Adjustable
Rotation (°)	355
Longitudinal tilting (°)	35
Transversal tilting (°)	35
Recessed depth (in)	7
Net weight (lb)	0.49
Package volume (in)	245
IP internal	20

### Download

[Family spec sheet](#) ZIP

[Mounting instructions](#) PDF

### Photometric Files

[LDT / IES](#) ZIP

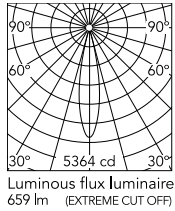
### Technical Drawings

[2D](#) ZIP

[3D](#) ZIP



## Schematic light drawing



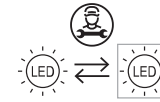
Beam Angle: 21°

h(m)	E(lx)	D(m)
1	5364	0.37
2	1341	0.73
3	596	1.10
4	335	1.47
5	215	1.83

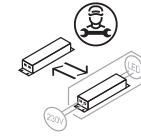
Luminous flux luminaire  
659 lm (EXTREME CUT OFF)

## Ecodesign and Energy

### Labelling



Replaceable (LED only)  
light source by a  
professional



Replaceable control  
gear by a professional

## Photometric

Lighting type	Direct
Light distribution	Symmetric
CCT (K)	2700
CRI>	90
McAdam steps (SDCM)	2
Rf fidelity index	93
Rg gamut index	99
LED Life / Failure Ratio	L70B40 > 50.000h (Tc=85°C)
Beam angle C0-180 (°)	21
Beam angle C90-270 (°)	21
Extreme cut off	No
UGR <sub>L</sub>	<10

## Electrical

Frequency (Hz)	50/60
Forward voltage (V)	12.6
LED current (mA)	700
Driver	Remote from housing
Dimmable	Yes
Dimming type	Lutron EcoSystem, Dimmable ELV, Dimmable 0-10V
Dimming interface	Remote Dimmable (Dimmer Not Included)

## Notes

Class 2

## Accessories & Power Supply

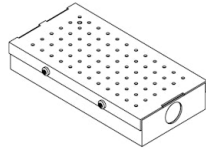


REQUIRED  
Accessory

Mounting

08.0825.00

Orientation Toolkit

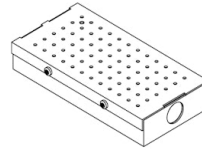


REQUIRED  
Power supply

Electrical

SP20W700MA-PEQ-S01

Lutron EcoSystem Splice Box UL  
500mA, 20W, 0.1% dim, 120-277V

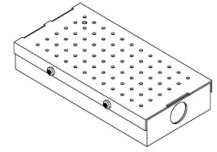


REQUIRED  
Power supply

Electrical

SP25W700MA-10V-A01

Splice Box UL 700mA , 25W, 0-  
10V Dimmable, 120-277V



REQUIRED  
Power supply

Electrical

SP15W700MA-VAR-U01

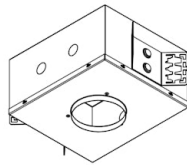
ERP ESS015W-0700-18 12.6W,  
700mA, 10-1VDC, Tri mode dim



REQUIRED  
Housing and Hanger Bar

08.1201.00.UL

Bar Hanger Set , Male-Female (set  
of 2)

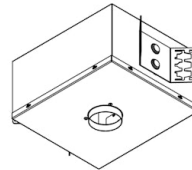


REQUIRED  
Housing and Hanger Bar

Installation

08.7073.00.90

Light Shadow PRO 60 Adjustable  
Trimless & 90 Fixed Trimless  
Airtight Housing for New  
construction, Remote Driver see  
dimnable driver options below.  
CCEA Chicago Plenum



REQUIRED  
Housing and Hanger Bar

Installation

08.7070.00A90

Light Shadow PRO 60 Fixed Trim  
& 90 Adjustable Trim Airtight  
Housing for New construction,  
Remote Driver, see dimnable  
driver options below for . CCEA  
Chicago Plenum



REQUIRED  
Frame

08.0166.00

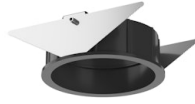
Installation Frame No Trim Ø60



REQUIRED  
Frame

08.0164.40

Installation Frame Trim Ø60



REQUIRED  
Frame

08.0164.14

Installation Frame Trim Ø60