

# FLOS



05.9507.ER Black/Steel/Steel

## Light Shadow Pro Ø45 Push Spot

Designed by FLOS Architectural, 2022

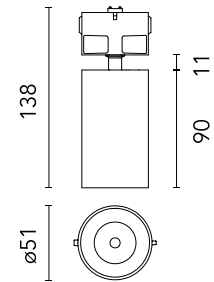


8.5W - 659lm - 2700K - CRI> 90 - Beam° 16

Luminaire with 2x1 functionality: it can work as downlight (recessed, flush with ceiling) or as a projector (fully adjustable). The passage from one position to the other can be made by moving the product easily by hand. Necessary installation pre-frames, not included (to be ordered separately). Requires a power supply unit which is not included, to be ordered separately according to recommendations.

Are you a professional and your project needs consulting and support?

[BOOK AN APPOINTMENT](#)



### Main specifications

Mounting	Ceiling recessed
Environments	Indoor dry location
Light source type	LED
Light sources included	Yes
LED type	LED array
Number of lamps	1
Power (W)	8.5
Source flux (lm)	756
Lumen Output (lm)	659
Efficacy (lm/W)	57

### Physical

Colour	Black/Steel/Steel
Trim	No
Orientation	Adjustable
Recessed depth (mm)	150
Net weight (kg)	0.23
IP internal	20

### Download

[Mounting instructions](#) PDF

### Photometric Files

[LDT / IES](#) ZIP

### Technical Drawings

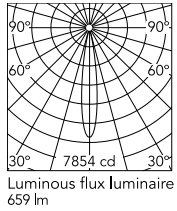
[2D](#) ZIP

[3D](#) ZIP

[Bim](#) ZIP



## Schematic light drawing



Beam Angle: 16°

h(m)	E(lx)	D(m)
1	7854	0.28
2	1964	0.55
3	873	0.83
4	491	1.10
5	314	1.38

## Photometric

Lighting type	Direct
Light distribution	Symmetric
CCT (K)	2700
CRI>	90
McAdam steps (SDCM)	3
LED Life / Failure Ratio	L80B50>60.000h_Tc85°C
Beam angle C0-180 (°)	16
Extreme cut off	Yes
UGR <sub>L</sub>	<10

## Electrical

Insulation class	III
Forward voltage (V)	12
LED current (mA)	700
Power supply	Remote
Dimmable	Yes

## Ecodesign and Energy Labelling

This product contains a light source of energy efficiency class G



Replaceable (LED only)  
light source by a  
professional

## Accessories & Power Supply



REQUIRED  
Power supply

Electrical

60.9592

Non dimmable continuous current power supply. 15-30W, 220/240V -50/60Hz with power current selected through adjustable switch. 350mA - 15W / 400mA - 17W / 450mA - 19W / 500mA - 22W / 550mA - 24W / 600mA - 26W / 650mA - 28W / 700mA - 30W.



REQUIRED  
Power supply

Electrical

60.9208

Continuous current power supply of 13-20W - Dim 1-10V&Push - 110/240V - 50/60Hz with power current selected through adjustable



REQUIRED  
Power supply

Electrical

60.9845

Continuous current power supply 40W, 220/240V - 50/60Hz with power current selected through adjustable switch. Dimmable 0-10V/PWM/RX. Output current: 1050mA - 40W / 1000mA - 40W / 950mA - 40W / 900mA - 37W / 850mA - 35W / 800mA - 33W / 750mA - 31W / 70...



REQUIRED  
Power supply

Electrical

60.9387

Continuous current power supply 18W, 100/277V - 50/60Hz with power current selected through adjustable switch. Non Dimmable.



REQUIRED  
Power supply

Electrical

60.8529A

Continuous current power supply of 10W, 110V / 12W, 240V - 50/60Hz with 700 mA supply voltage

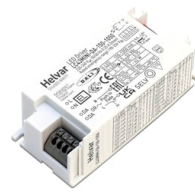


REQUIRED  
Power supply

Electrical

60.9834.0700

700mA, 20W, 220/240V - 50/60Hz constant current power supply. Non Dimmable.



REQUIRED  
Power supply

Electrical

60.7678

Continuous current supply source of 240V - 50/60Hz with dimmable Dali 2, Push dimming. 150mA - 7.8W / 200mA - 10.4W / 250mA - 13W / 300mA - 15.6W / 350mA - 18.2W / 400mA - 20.8W / 500mA - 26W / 600mA - 31.2W / 700mA - 36.4W / 750mA - 39W / 800mA - 41.6...



REQUIRED

Installation

08.0757.00

Installation Frame No Trim Light Shadow Pro Ø45 Push



REQUIRED  
Power supply

Electrical

60.7785

Constant current power supply  
42W, 220-240V CASAMBI  
dimmable.



REQUIRED  
Power supply

Electrical

60.9467

Mains dimming 20W Constant  
current power supply, AC phase-  
cut adjustable, trailing & leading  
edge dimming, 220/240V -  
50/60Hz, with dip-switch  
programmable power supply  
current. Output current: 900mA -  
20W / 850mA - 20W / 800mA -  
20W / 750mA - 20W / 70...