

FLOS



05.9514.40 Black/White/Black

Light Shadow Pro Ø45 Push Medium

Designed by FLOS Architectural, 2022

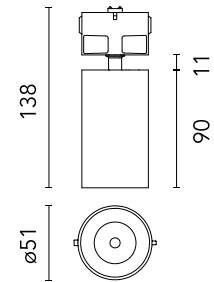


8.5W - 645lm - 2700K - CRI> 90 - Beam° 21

Luminaire with 2x1 functionality: it can work as downlight (recessed, flush with ceiling) or as a projector (fully adjustable). The passage from one position to the other can be made by moving the product easily by hand. Necessary installation pre-frames, not included (to be ordered separately). Requires a power supply unit which is not included, to be ordered separately according to recommendations.

Are you a professional and your project needs consulting and support?

[BOOK AN APPOINTMENT](#)



Main specifications

| | |
|------------------------|---------------------|
| Mounting | Ceiling recessed |
| Environments | Indoor dry location |
| Light source type | LED |
| Light sources included | Yes |
| LED type | LED array |
| Number of lamps | 1 |
| Power (W) | 8.5 |
| Source flux (lm) | 756 |
| Lumen Output (lm) | 645 |
| Efficacy (lm/W) | 56 |

Physical

| | |
|---------------------|-------------------|
| Colour | Black/White/Black |
| Trim | No |
| Orientation | Adjustable |
| Recessed depth (mm) | 150 |
| Net weight (kg) | 0.23 |
| IP internal | 20 |

Download

[Mounting instructions](#) PDF

Photometric Files

[LDT / IES](#) ZIP

Technical Drawings

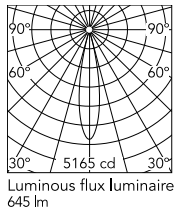
[2D](#) ZIP

[3D](#) ZIP

[Bim](#) ZIP



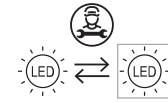
Schematic light drawing



| h(m) | E(lx) | D(m) |
|------|-------|------|
| 1 | 5165 | 0.36 |
| 2 | 1291 | 0.73 |
| 3 | 574 | 1.09 |
| 4 | 323 | 1.46 |
| 5 | 207 | 1.82 |

Ecodesign and Energy Labelling

This product contains a light source of energy efficiency class G



Replaceable (LED only)
light source by a
professional

Photometric

| | |
|--------------------------|-----------------------|
| Lighting type | Direct |
| Light distribution | Symmetric |
| CCT (K) | 2700 |
| CRI> | 90 |
| McAdam steps (SDCM) | 3 |
| LED Life / Failure Ratio | L80B50>60.000h_Tc85°C |
| Beam angle C0-180 (°) | 21 |
| Extreme cut off | Yes |
| UGR _L | <10 |

Electrical

| | |
|---------------------|--------|
| Insulation class | III |
| Forward voltage (V) | 12 |
| LED current (mA) | 700 |
| Power supply | Remote |
| Dimmable | Yes |

Accessories & Power Supply



REQUIRED
Power supply

Electrical

60.9592

Non dimmable continuous current power supply. 15-30W, 220/240V -50/60Hz with power current selected through adjustable switch. 350mA - 15W / 400mA - 17W / 450mA - 19W / 500mA - 22W / 550mA - 24W / 600mA - 26W / 650mA - 28W / 700mA - 30W.



REQUIRED
Power supply

Electrical

60.9208

Continuous current power supply of 13-20W - Dim 1-10V&Push - 110/240V - 50/60Hz with power current selected through adjustable



REQUIRED
Power supply

Electrical

60.9845

Continuous current power supply 40W, 220/240V - 50/60Hz with power current selected through adjustable switch. Dimmable 0-10V/PWM/RX. Output current: 1050mA - 40W / 1000mA - 40W / 950mA - 40W / 900mA - 37W / 850mA - 35W / 800mA - 33W / 750mA - 31W / 70...



REQUIRED
Power supply

Electrical

60.9387

Continuous current power supply 18W, 100/277V - 50/60Hz with power current selected through adjustable switch. Non Dimmable.



REQUIRED
Power supply

Electrical

60.8529A

Continuous current power supply of 10W, 110V / 12W, 240V - 50/60Hz with 700 mA supply voltage

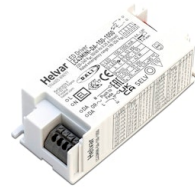


REQUIRED
Power supply

Electrical

60.9834.0700

700mA, 20W, 220/240V - 50/60Hz constant current power supply. Non Dimmable.



REQUIRED
Power supply

Electrical

60.7678

Continuous current supply source of 240V - 50/60Hz with dimmable Dali 2, Push dimming. 150mA - 7.8W / 200mA - 10.4W / 250mA - 13W / 300mA - 15.6W / 350mA - 18.2W / 400mA - 20.8W / 500mA - 26W / 600mA - 31.2W / 700mA - 36.4W / 750mA - 39W / 800mA - 41.6...



REQUIRED

Installation

08.0757.00

Installation Frame No Trim Light Shadow Pro Ø45 Push



REQUIRED
Power supply

Electrical

60.7785

Constant current power supply
42W, 220-240V CASAMBI
dimmable.



REQUIRED
Power supply

Electrical

60.9467

Mains dimming 20W Constant
current power supply, AC phase-
cut adjustable, trailing & leading
edge dimming, 220/240V -
50/60Hz, with dip-switch
programmable power supply
current. Output current: 900mA -
20W / 850mA - 20W / 800mA -
20W / 750mA - 20W / 70...