

FLOS

05.2505.14 Black

Light Shadow Pro Ø 45 Fixed Optic Spot

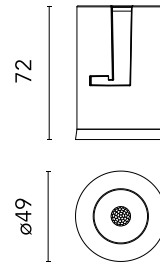
Designed by FLOS Architectural, 2022



LED lighting module, with low glare, to be inserted in the recessed frames (not included), installation through a bayonet system with interchangeable spots. Remote driver not included.

Are you a professional and your project needs consulting and support?

[BOOK AN APPOINTMENT](#)



Main specifications

Mounting	Ceiling recessed
Environments	Indoor dry location
Light source type	LED
Light sources included	Yes
LED type	LED array
Number of lamps	1
Power (W)	8.8
System power (W)	11.1
Source flux (lm)	834
Lumen Output (lm)	678
Efficacy (lm/W)	61

Physical

Colour	Black
Orientation	Fixed
Recessed depth (mm)	102
Bezel diameter (mm)	49
Spot diameter (mm)	49
Length (mm)	49
Net weight (kg)	0.12
Package height (mm)	90
Package width (mm)	140
Package length (mm)	105
IP internal	20
IP external	54

Download

[Mounting instructions](#)  PDF

Photometric Files

[LDT / IES](#)  ZIP

Technical Drawings

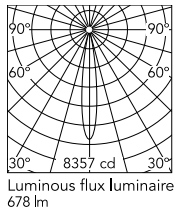
[2D](#)  ZIP

[3D](#)  ZIP

[Bim](#)  ZIP



Schematic light drawing



Beam Angle: 15°

h(m)	E(lx)	D(m)
1	8357	0.27
2	2089	0.54
3	929	0.80
4	522	1.07
5	334	1.34

Luminous flux luminaire
678 lm

Photometric

Lighting type	Direct
Light distribution	Symmetric
CCT (K)	3000
CRI>	90
McAdam steps (SDCM)	2
Rf fidelity index	91
Rg gamut index	100
LED Life / Failure Ratio	L90B10>33.000h Tc=85°C
Beam angle C0-180 (°)	15
Beam angle C90-270 (°)	15
UGR _L	<10

Electrical

Insulation class	III
Forward voltage (V)	12
LED current (mA)	700
Power supply	Remote excluded
Dimmable	Yes
Power supply type	Dimmable Casambi, Mains Cut Dimming, Dimmable DALI 2, Dimmable 1-10V, Dimmable Push
Precabled	No

Ecodesign and Energy Labelling

This product contains a light source of energy efficiency class F



Notes

Please consult the dimensions of the unit: when it does not fit through the recessing hole, an accessible remote location for the unit is required.

Accessories & Power Supply



REQUIRED
Power supply

Electrical

60.9845

Continuous current power supply 40W, 220/240V - 50/60Hz with power current selected through adjustable switch. Dimmable 0-10V/PWM/RX. Output current: 1050mA - 40W / 1000mA - 40W / 950mA - 40W / 900mA - 37W / 850mA - 35W / 800mA - 33W / 750mA - 31W / 70...



REQUIRED
Power supply

Electrical

60.9162

Continuous current power supply 220/240V - 50/60Hz. Adjustable Current 300mA-13W / 350mA-15W / 400mA-18W / 450mA-20W / 500mA-22W / 550mA-24W / 600mA-27W / 650mA-29W / 700mA-31W / 750mA-32W / 800mA-33W / 850mA-35W / 900mA-38W / 950mA-40W / 1000/1050mA-4...



REQUIRED
Power supply

Electrical

60.9467

Mains dimming 20W Constant current power supply, AC phase-cut adjustable, trailing & leading edge dimming, 220/240V - 50/60Hz, with dip-switch programmable power supply current. Output current: 900mA - 20W / 850mA - 20W / 800mA - 20W / 750mA - 20W / 70...



REQUIRED
Power supply

Electrical

60.9592

Non dimmable continuous current power supply. 15-30W, 220/240V -50/60Hz with power current selected through adjustable switch. 350mA - 15W / 400mA - 17W / 450mA - 19W / 500mA - 22W / 550mA - 24W / 600mA - 26W / 650mA - 28W / 700mA - 30W.



REQUIRED
Power supply

Electrical

60.9208

Continuous current power supply of 13-20W - Dim 1-10V&Push - 110/240V - 50/60Hz with power current selected through adjustable



REQUIRED
Power supply

Electrical

60.7785

Constant current power supply 42W, 220-240V CASAMBI dimmable.



REQUIRED
Power supply

Electrical

60.8529A

Continuous current power supply of 10W, 110V / 12W, 240V - 50/60Hz with 700 mA supply voltage



REQUIRED
Power supply

Electrical

60.9713.0700

700mA, 20 W, 220/240 V - 50/60 Hz constant current power supply. Dimmable by Dali2

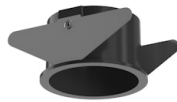


REQUIRED
Power supply

Electrical

60.7678

Continuous current supply source of 240V - 50/60Hz with dimmable Dali 2, Push dimming. 150mA - 7.8W / 200mA - 10.4W / 250mA - 13W / 300mA - 15.6W / 350mA - 18.2W / 400mA - 20.8W / 500mA - 26W / 600mA - 31.2W / 700mA - 36.4W / 750mA - 39W / 800mA - 41.6...

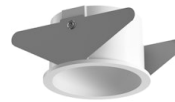


REQUIRED
Frame

Installation

08.0360.14

Installation Frame Trim for Light Shadow Pro Ø 45



REQUIRED
Frame

Installation

08.0360.40

Installation Frame Trim for Light Shadow Pro Ø 45



REQUIRED
Frame

Installation

08.0361.00

Installation Frame No Trim for Light Shadow Pro Ø 45