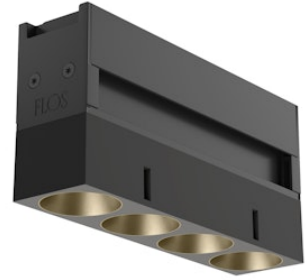


FLOS

05.1832.14CDA Black/Bronze

Light Shadow Optic Wide Flood Dali Version

Designed by FLOS Architectural, 2018



LED lighting module, with 4 spotlights and low glare, to be installed in the The Running Magnet system. DC/DC, built-in electronic current converter.

Are you a professional and your project needs consulting and support?

[BOOK AN APPOINTMENT](#)



Main specifications

Mounting	Track
Environments	Indoor dry location
Light source type	LED
Light sources included	Yes
LED type	Power LED
Lamp category	LED
Power (W)	10.8
System power (W)	0
Source flux (lm)	0

Physical

Colour	Black/Bronze
Orientation	Fixed
Length (mm)	140
Net weight (kg)	0.34
Package height (mm)	6
Package length (mm)	21
IP internal	20
IP external	20

Download

Mounting instructions [↓ PDF](#)

Photometric Files

LDT / IES [↓ ZIP](#)


Technical Drawings


2D [↓ ZIP](#)

3D [↓ ZIP](#)

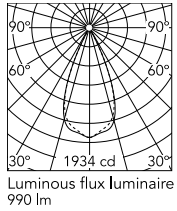


Ecodesign and Energy Labelling

 Replaceable (LED only) light source by a professional

 Replaceable control gear by a professional

Schematic light drawing



h(m)	E(lx)	D(m)
1	1934	0.84
2	484	1.68
3	215	2.52
4	121	3.37
5	77	4.21

Photometric

Lighting type	Direct
Light distribution	Symmetric
CCT (K)	2700
CRI>	90
Extreme cut off	No

Electrical

Insulation class	III
Forward voltage (V)	24
LED current (mA)	900
Power supply	Remote excluded
Dimmable	Yes
Power supply type	Dimmable DALI 1
Emergency	No

Notes

For wireless lighting control, choose integrated Casambi versions.