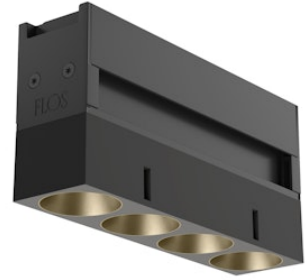


FLOS

05.1802.14CDA Black/Bronze

Light Shadow Optic Spot Dali Version

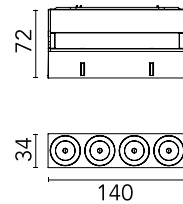
Designed by FLOS Architectural, 2018



LED lighting module, with 4 spotlights and low glare, to be installed in the The Running Magnet system. DC/DC, built-in electronic current converter.

Are you a professional and your project needs consulting and support?

[BOOK AN APPOINTMENT](#)



Main specifications

| | |
|------------------------|---------------------|
| Mounting | Track |
| Environments | Indoor dry location |
| Light source type | LED |
| Light sources included | Yes |
| LED type | Power LED |
| Lamp category | LED |
| Power (W) | 10.8 |
| System power (W) | 0 |
| Source flux (lm) | 0 |

Physical

| | |
|---------------------|--------------|
| Colour | Black/Bronze |
| Orientation | Fixed |
| Length (mm) | 140 |
| Net weight (kg) | 0.34 |
| Package height (mm) | 6 |
| Package width (mm) | 13 |
| Package length (mm) | 21 |
| IP internal | 20 |
| IP external | 20 |

Download

Mounting instructions [↓ PDF](#)

Photometric Files

LDT / IES [↓ ZIP](#)

Technical Drawings


2D [↓ ZIP](#)

3D [↓ ZIP](#)

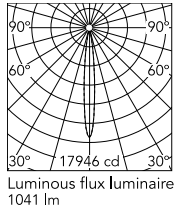


Ecodesign and Energy Labelling

 Replaceable (LED only) light source by a professional

 Replaceable control gear by a professional

Schematic light drawing



| h(m) | E(lx) | D(m) |
|------|-------|------|
| 1 | 17946 | 0.20 |
| 2 | 4486 | 0.39 |
| 3 | 1994 | 0.59 |
| 4 | 1122 | 0.78 |
| 5 | 718 | 0.98 |

Photometric

| | |
|--------------------|-----------|
| Lighting type | Direct |
| Light distribution | Symmetric |
| CCT (K) | 2700 |
| CRI> | 90 |
| Extreme cut off | No |

Electrical

| | |
|---------------------|-----------------|
| Insulation class | III |
| Forward voltage (V) | 24 |
| LED current (mA) | 900 |
| Power supply | Remote excluded |
| Dimmable | Yes |
| Power supply type | Dimmable DALI 1 |
| Emergency | No |

Notes

For wireless lighting control, choose integrated Casambi versions.