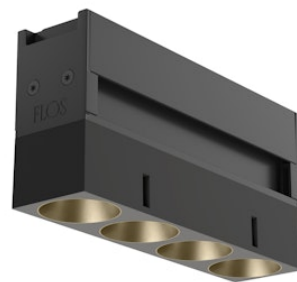


FLOS

05.1807.14CCB Black/Bronze

Light Shadow Optic Spot Casambi Integrated

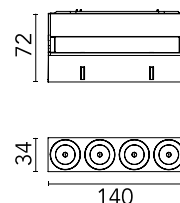
Designed by FLOS Architectural, 2018



LED lighting module, with 4 spotlights and low glare, to be installed in the The Running Magnet system. DC/DC, built-in electronic current converter.

Are you a professional and your project needs consulting and support?

[BOOK AN APPOINTMENT](#)



Main specifications

Mounting	Track
Environments	Indoor dry location
Light source type	LED
Light sources included	Yes
LED type	Power LED
Lamp category	LED
Power (W)	10.8
System power (W)	0
Source flux (lm)	0

Physical

Colour	Black/Bronze
Orientation	Fixed
Length (mm)	140
Net weight (kg)	0.34
Package height (mm)	6
Package width (mm)	13
Package length (mm)	21
IP internal	20
IP external	20

Download

Mounting instructions [↓ PDF](#)

Photometric Files

LDT / IES [↓ ZIP](#)

Technical Drawings


2D [↓ ZIP](#)

3D [↓ ZIP](#)

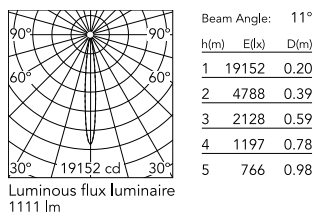


Ecodesign and Energy Labelling

 Replaceable (LED only) light source by a professional

 Replaceable control gear by a professional

Schematic light drawing



Photometric

Lighting type	Direct
Light distribution	Symmetric
CCT (K)	3000
CRI>	90
Extreme cut off	No

Electrical

Insulation class	III
Forward voltage (V)	24
LED current (mA)	900
Power supply	Remote excluded
Dimmable	Yes
Power supply type	Dimmable Casambi
Emergency	No

Notes

For wireless lighting control, choose integrated Casambi versions.