

FLOS

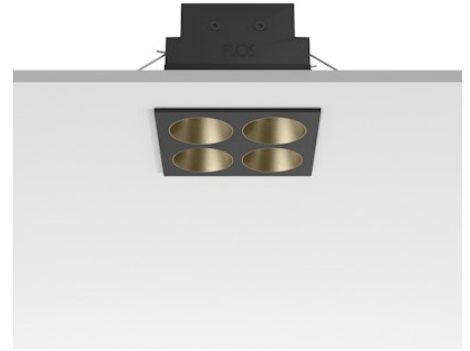
05.0622.14CNI Black/Bronze

Light Shadow Fixed Trim Mains Dimming Version 4 Spots Square Optic Flood

Designed by FLOS Architectural, 2022

770lm - 2700K - CRI> 90 - Beam° 35

Recessed integrated luminaire with 4 LED lighting spots. Remote power supply included (220-240V). Pre-installation frame not required.



Are you a professional and your project needs consulting and support?

BOOK AN APPOINTMENT



Main specifications

| | |
|------------------------|---------------------|
| Mounting | Ceiling recessed |
| Environments | Indoor dry location |
| Light source type | LED |
| Light sources included | Yes |
| LED type | Power LED |
| Number of lamps | 1 |
| System power (W) | 9 |
| Source flux (lm) | 956 |
| Lumen Output (lm) | 770 |
| Efficacy (lm/W) | 85 |

Physical

| | |
|---------------------|--------------|
| Colour | Black/Bronze |
| Trim | Yes |
| Orientation | Fixed |
| Net weight (kg) | 0.34 |
| Package height (mm) | 16 |
| Package width (mm) | 14 |
| Package length (mm) | 21 |
| IP internal | 20 |
| IP external | 55 |

Download

Mounting instructions [↓ PDF](#)

Photometric Files

LDT / IES [↓ ZIP](#)

Technical Drawings

2D [↓ ZIP](#)

3D [↓ ZIP](#)

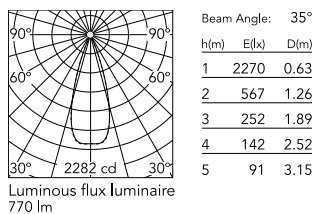


Ecodesign and Energy Labelling

 Replaceable (LED only) light source by a professional

 Replaceable control gear by a professional

Schematic light drawing



Photometric

| | |
|--------------------------|-------------------------------|
| Lighting type | Direct |
| Light distribution | Symmetric |
| CCT (K) | 2700 |
| CRI> | 90 |
| LED Life / Failure Ratio | L80B10 > 50.000h (Tc=85°C) |
| Beam angle C0-180 (°) | 35 |
| Beam angle C90-270 (°) | 35 |
| Extreme cut off | No |
| UGR _L | <10 |

Electrical

| | |
|--------------------|-------------------|
| Insulation class | II |
| Frequency (Hz) | 50/60 |
| Main voltage (Vac) | 220-240 |
| LED current (mA) | 900 |
| Power supply | Remote included |
| Dimmable | Yes |
| Power supply type | Mains Cut Dimming |