

# FLOS

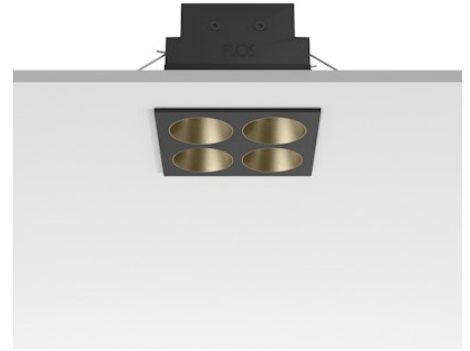
05.0617.14C Black/Bronze

## Light Shadow Fixed Trim 4 Spots Square Optic Medium

Designed by FLOS Architectural, 2022

1061lm - 3000K - CRI> 90 - Beam° 25

Recessed integrated luminaire with 4 LED lighting spots. Remote power supply included (220-240V). Pre-installation frame not required.



Are you a professional and your project needs consulting and support?

BOOK AN APPOINTMENT

### Main specifications

|                        |                     |
|------------------------|---------------------|
| Mounting               | Ceiling recessed    |
| Environments           | Indoor dry location |
| Light source type      | LED                 |
| Light sources included | Yes                 |
| LED type               | Power LED           |
| Number of lamps        | 1                   |
| System power (W)       | 10.8                |
| Source flux (lm)       | 1281                |
| Lumen Output (lm)      | 1061                |
| Efficacy (lm/W)        | 98                  |

### Physical

|                     |              |
|---------------------|--------------|
| Colour              | Black/Bronze |
| Trim                | Yes          |
| Orientation         | Fixed        |
| Net weight (kg)     | 0.34         |
| Package height (mm) | 16           |
| Package width (mm)  | 14           |
| Package length (mm) | 21           |
| IP internal         | 20           |
| IP external         | 55           |



### Download

Mounting instructions [↓ PDF](#)

### Photometric Files

LDT / IES [↓ ZIP](#)

### Technical Drawings

2D [↓ ZIP](#)

3D [↓ ZIP](#)

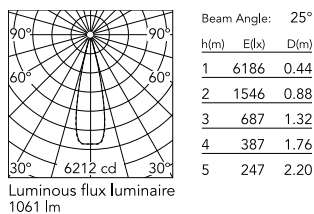


### Ecodesign and Energy Labelling

 Replaceable (LED only) light source by a professional

 Replaceable control gear by a professional

## Schematic light drawing



## Photometric

|                          |                               |
|--------------------------|-------------------------------|
| Lighting type            | Direct                        |
| Light distribution       | Symmetric                     |
| CCT (K)                  | 3000                          |
| CRI>                     | 90                            |
| LED Life / Failure Ratio | L80B10 > 50.000h<br>(Tc=85°C) |
| Beam angle C0-180 (°)    | 25                            |
| Beam angle C90-270 (°)   | 25                            |
| Extreme cut off          | No                            |
| UGR <sub>L</sub>         | <10                           |

## Electrical

|                    |                 |
|--------------------|-----------------|
| Insulation class   | II              |
| Frequency (Hz)     | 50/60           |
| Main voltage (Vac) | 220-240         |
| LED current (mA)   | 900             |
| Power supply       | Remote included |
| Dimmable           | No              |
| Power supply type  | Non Dimmable    |