

FLOS

03.8614.ERC9S Steel

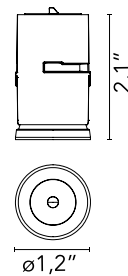
Light Shadow Dots - Single Spot Module. Set of 4 Spots

Designed by FLOS Architectural, 2019



LED - Power LED - 4 x 1.8W - 4 x 782lm - 3000K - CRI> 90 - Beam° 22

LED lighting module, with low glare, to be inserted in the recessed frames (not included), installation through a bayonet system with interchangeable spots. Available in one-light versions and groups of two and four lights. Driver not included, the driver has to be directly connected to the embedding frames.



Are you a professional and your project needs consulting and support?

[BOOK AN APPOINTMENT](#)

Main specifications

Mounting	Ceiling recessed
Environments	Indoor dry location
Light Source Type	LED
Light sources included	Yes
LED type	Power LED
Lamp category	LED
Number of lamps	4
Power (W)	1.8
Source flux (lm)	904
System flux (lm)	782
Efficacy (lm/W)	108

Physical

Color	Steel
Orientation	Fixed
Net weight (lb)	0.43
Gross weight (lb)	0.61
Package height (in)	0.29
Package volume (in)	61.02
IP internal	20

Download

Family spec sheet	↓ ZIP
Mounting instructions	↓ PDF
Mounting instructions	↓ PDF

Photometric Files

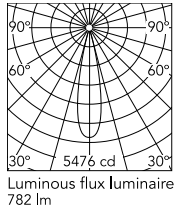
LDT / IES	↓ ZIP
-----------	-----------------------

Technical Drawings

2D	↓ ZIP
3D	↓ ZIP



Schematic light drawing



Photometric

Lighting type	Direct
Light distribution	Symmetric
CCT (K)	3000
CRI>	90
LED Life / Failure Ratio	L80B50>50.000h (Tc=85°C)
Beam angle C0-180 (°)	22
Beam angle C90-270 (°)	22
Extreme cut off	No
UGR _L	<10

Electrical

Forward voltage (V)	6
LED current (mA)	600
Driver	Remote
Dimmable	Yes
Dimming interface	Remote Dimmable (Dimmer Not Included)

Ecodesign and Energy

Labelling



Accessories & Power Supply

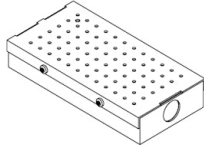


REQUIRED
Power supply

Electrical

SP12W600MA-10V-T01

Splice Box UL 7"x3-5/8"x1-1/4",
UL. With Eldoled Eco Drive 12W
series Driver Programmed to
600mA, 0-10V Dim 120-277V



REQUIRED
Power supply

SP40W600MA-10V-D01

Splice Box 7"x3-5/8"x1-1/4",
600mA, 40W, 0-10V Dimmable,
120-277V



REQUIRED
Frame

08.0580.00.9S

Accessory Pre-installation frame,
1L



REQUIRED
Frame

08.0581.00.9S

Accessory Pre-installation frame,
2 Lights Space 43 mm - 1.69" on
center



REQUIRED
Frame

08.0583.00.9S

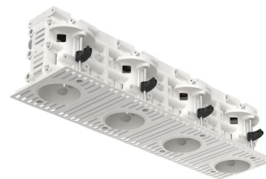
Accessory Pre-installation frame,
2 Lights Space 70 mm - 2.76" on
center



REQUIRED
Frame

08.0582.00.9S

Accessory Pre-installation frame,
4 Lights Space 43 mm - 1.69" on
center



REQUIRED
Frame

08.0584.00.9S

Accessory Pre-installation frame,
4 Lights Space 70 mm - 2.76" on
center



REQUIRED
Frame

08.0661.14.9S

ACC FRAME Trim BLACK Light
Shadow DOTS UL



REQUIRED
Frame

08.0661.40.9S

ACC FRAME Trim WHITE Light
Shadow Dots

OPTIONAL
Frame

Installation

08.0586.00

Accessory Pre-installatio frame,
70 mm - 2.76" spacer