

FLOS

03.8611.40C9S White

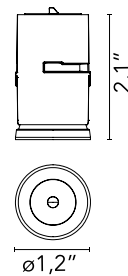
Light Shadow Dots - Single Spot Module. Set of 4 Spots

Designed by FLOS Architectural, 2019



LED - Power LED - 4 x 1.8W - 4 x 743lm - 2700K - CRI> 90 - Beam° 22

LED lighting module, with low glare, to be inserted in the recessed frames (not included), installation through a bayonet system with interchangeable spots. Available in one-light versions and groups of two and four lights. Driver not included, the driver has to be directly connected to the embedding frames.



Are you a professional and your project needs consulting and support?

[BOOK AN APPOINTMENT](#)

Main specifications

| | |
|------------------------|---------------------|
| Mounting | Ceiling recessed |
| Environments | Indoor dry location |
| Light Source Type | LED |
| Light sources included | Yes |
| LED type | Power LED |
| Lamp category | LED |
| Number of lamps | 4 |
| Power (W) | 1.8 |
| Source flux (lm) | 848 |
| System flux (lm) | 743 |
| Efficacy (lm/W) | 103 |

Physical

| | |
|---------------------|-------|
| Color | White |
| Orientation | Fixed |
| Net weight (lb) | 0.43 |
| Gross weight (lb) | 0.61 |
| Package height (in) | 0.29 |
| Package volume (in) | 61.02 |
| IP internal | 20 |

Download

| | |
|-----------------------|-----------------------|
| Family spec sheet | ↓ ZIP |
| Mounting instructions | ↓ PDF |
| Mounting instructions | ↓ PDF |

Photometric Files

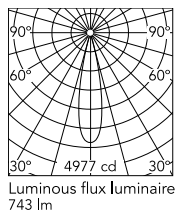
| | |
|-----------|-----------------------|
| LDT / IES | ↓ ZIP |
|-----------|-----------------------|

Technical Drawings

| | |
|----|-----------------------|
| 2D | ↓ ZIP |
| 3D | ↓ ZIP |



Schematic light drawing



Photometric

| | |
|--------------------------|-----------------------------|
| Lighting type | Direct |
| Light distribution | Symmetric |
| CCT (K) | 2700 |
| CRI> | 90 |
| LED Life / Failure Ratio | L80B50>50.000h (Tc=85°C) |
| Beam angle C0-180 (°) | 22 |
| Beam angle C90-270 (°) | 22 |
| Extreme cut off | No |
| UGR _L | <10 |

Electrical

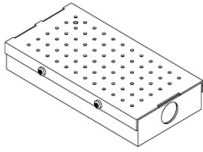
| | |
|---------------------|--|
| Forward voltage (V) | 6 |
| LED current (mA) | 600 |
| Driver | Remote |
| Dimmable | Yes |
| Dimming interface | Remote Dimmable (Dimmer Not Included) |

Ecodesign and Energy

Labelling



Accessories & Power Supply

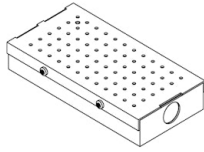


REQUIRED
Power supply

Electrical

SP12W600MA-10V-T01

Splice Box UL 7"x3-5/8"x1-1/4",
UL. With Eldoled Eco Drive 12W
series Driver Programmed to
600mA, 0-10V Dim 120-277V



REQUIRED
Power supply

SP40W600MA-10V-D01

Splice Box 7"x3-5/8"x1-1/4",
600mA, 40W, 0-10V Dimmable,
120-277V



REQUIRED
Frame

08.0580.00.9S

Accessory Pre-installation frame,
1L



REQUIRED
Frame

08.0581.00.9S

Accessory Pre-installation frame,
2 Lights Space 43 mm - 1.69" on
center



REQUIRED
Frame

08.0583.00.9S

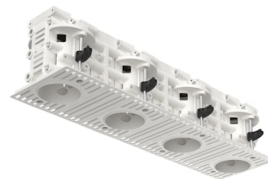
Accessory Pre-installation frame,
2 Lights Space 70 mm - 2.76" on
center



REQUIRED
Frame

08.0582.00.9S

Accessory Pre-installation frame,
4 Lights Space 43 mm - 1.69" on
center



REQUIRED
Frame

08.0584.00.9S

Accessory Pre-installation frame,
4 Lights Space 70 mm - 2.76" on
center



REQUIRED
Frame

08.0661.14.9S

ACC FRAME Trim BLACK Light
Shadow DOTS UL



REQUIRED
Frame

08.0661.40.9S

ACC FRAME Trim WHITE Light
Shadow Dots

OPTIONAL
Frame

Installation

08.0586.00

Accessory Pre-installatio frame,
70 mm - 2.76" spacer