

# FLOS

03.8673.14C Black

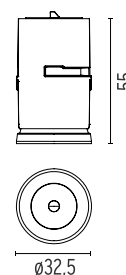
## Light Shadow Dots - Single Spot Module. Set of 2 Spots

Designed by FLOS Architectural, 2022



LED - Power LED - 2 x 2.7W - 2 x 566lm - 4000K - CRI> 90 - Beam° 29

LED lighting module, with low glare, to be inserted in the recessed frames (not included), installation through a bayonet system with interchangeable spots. Available in one-light versions and groups of two and four lights. Driver not included, the driver has to be directly connected to the embedding frames.



Are you a professional and your project needs consulting and support?

[BOOK AN APPOINTMENT](#)



### Main specifications

Mounting	Ceiling recessed
Environments	Indoor dry location
Light source type	LED
Light sources included	Yes
LED type	Power LED
Lamp category	LED
Number of lamps	2
Power (W)	2.7
Source flux (lm)	684
Lumen Output (lm)	566
Efficacy (lm/W)	104


### Physical

Colour	Black
Trim	No
Orientation	Fixed
Recessed depth (mm)	75
Spot diameter (mm)	33
Length (mm)	32
Net weight (kg)	0.1
IP internal	20
IP external	23

### Download

- [Mounting instructions](#)  PDF
- [Mounting instructions](#)  PDF

### Photometric Files

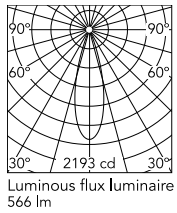
- [LDT / IES](#)  ZIP

### Technical Drawings

- [2D](#)  ZIP
- [3D](#)  ZIP



## Schematic light drawing



Beam Angle: 29°

h(m)	E(lx)	D(m)
1	2193	0.52
2	548	1.04
3	244	1.57
4	137	2.09
5	88	2.61

2193 cd

Luminous flux luminaire  
566 lm

## Photometric

Lighting type	Direct
Light distribution	Symmetric
CCT (K)	4000
CRI>	90
LED Life / Failure Ratio	L80B50 50.000h
Beam angle C0-180 (°)	29
Beam angle C90-270 (°)	29
Extreme cut off	No
UGR <sub>L</sub>	<10

## Electrical

Insulation class	III
Forward voltage (V)	3
LED current (mA)	900
Power supply	Remote excluded
Dimmable	Yes
Power supply type	Non Dimmable, Dimmable Casambi, Dimmable 0-10V, Dimmable DALI 2, Dimmable Push

## Ecodesign and Energy Labelling

This product contains a light source of energy efficiency class G





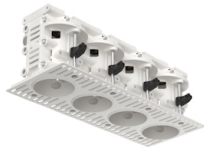


REQUIRED  
Power supply

Electrical

60.8911

Non dimmable continuous current power supply of 15-20W, 110/240V - 50/60Hz, with power current selected through adjustable 350 mA-15W /500 mA /550 / 700 / 850 mA / 900 mA - 20W switch



REQUIRED  
Frame

Installation

08.0582.00

Pre-installation frame. 4L - int 43



REQUIRED  
Power supply

Electrical

60.9467

Mains dimming 20W Constant current power supply, AC phase-cut adjustable, trailing & leading edge dimming, 220/240V - 50/60Hz, with dip-switch programmable power supply current. Output current: 900mA - 20W / 850mA - 20W / 800mA - 20W / 750mA - 20W / 70...



REQUIRED  
Power supply

Electrical

60.9602

'Continuous current power supply of 20W, dimmable DALI 2, 220/240V - 50/60Hz with power current 900 mA



REQUIRED  
Power supply

Electrical

60.8534

Continuous current power supply. 230/240V - 50/60Hz. Adjustable Current 350mA - 17W / 500mA - 24W / 550mA - 25W / 700/ 750 mA - 32W switch by trailing and leading edge dimming, mains dimming or push dimming



REQUIRED  
Power supply

Electrical

60.9162

Continuous current power supply 220/240V - 50/60Hz. Adjustable Current 300mA-13W / 350mA-15W / 400mA-18W / 450mA-20W / 500mA-22W / 550mA-24W / 600mA-27W / 650mA-29W / 700mA-31W / 750mA-32W / 800mA-33W / 850mA-35W / 900mA-38W / 950mA-40W / 1000/1050mA-4...



REQUIRED  
Power supply

Electrical

60.9414

Continuous current power supply of 20W, dimmable 0-10V, 220/240V - 50/60Hz



REQUIRED  
Power supply

Electrical

60.9207

Casambi continuous current power supply, dimmable 220/240V - 50/60Hz, 300mA - 16W / 350mA - 18,5W / 400mA - 21,5W / 450 mA - 24W / 500mA - 27W / 600mA - 32W / 650 mA - 35W / 700 mA - 36W /750 /800 /900 /1000 /1050 /1200 mA - 38W.



REQUIRED  
Frame

Installation

08.0580.00

Pre-installation frame. 1L



REQUIRED  
Frame

Installation

08.0581.00

Pre-installation frame. 2L - int 43



REQUIRED  
Frame

Installation

08.0583.00

Pre-installation frame. 2L - int 70



REQUIRED  
Frame

Installation

08.0584.00

Pre-installation frame. 4L - int 70



REQUIRED  
Frame

Installation

08.0661.40

Dots Trim Pre-installation frame.  
1L



REQUIRED  
Frame

Installation

08.0661.14

Dots Trim Pre-installation frame.  
1L



OPTIONAL  
Frame

Installation

08.0586.00

Accessory Pre-installation frame,  
70 mm - 2.76" spacer