

FLOS

03.8607.ESC Bronze

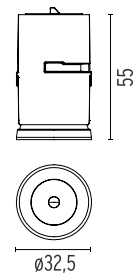
Light Shadow Dots - Single Spot Module. Set of 1 Spot

Designed by FLOS Architectural, 2022



LED - Power LED - 2.7W - 293lm - 4000K - CRI> 90 - Beam° 23

LED lighting module, with low glare, to be inserted in the recessed frames (not included), installation through a bayonet system with interchangeable spots. Available in one-light versions and groups of two and four lights. Driver not included, the driver has to be directly connected to the embedding frames.



Are you a professional and your project needs consulting and support?

[BOOK AN APPOINTMENT](#)

Main specifications

Mounting	Ceiling recessed
Environments	Indoor dry location
Light source type	LED
Light sources included	Yes
LED type	Power LED
Lamp category	LED
Number of lamps	1
Power (W)	2.7
Source flux (lm)	342
Lumen Output (lm)	293
Efficacy (lm/W)	108

Physical

Colour	Bronze
Trim	No
Orientation	Fixed
Recessed depth (mm)	75
Spot diameter (mm)	33
Length (mm)	32
Net weight (kg)	0.05
IP internal	20
IP external	23

Download

- [Mounting instructions](#) PDF
- [Mounting instructions](#) PDF

Photometric Files

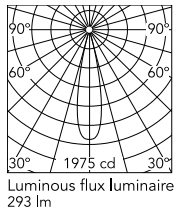
- [LDT / IES](#) ZIP

Technical Drawings

- [2D](#) ZIP
- [3D](#) ZIP



Schematic light drawing



Beam Angle: 23°

h(m)	E(lx)	D(m)
1	1975	0.40
2	494	0.80
3	219	1.20
4	123	1.60
5	79	2.00

Luminous flux luminaire
293 lm

Photometric

Lighting type	Direct
Light distribution	Symmetric
CCT (K)	4000
CRI>	90
LED Life / Failure Ratio	L80B50 50.000h
Beam angle C0-180 (°)	23
Beam angle C90-270 (°)	23
Extreme cut off	No
UGR _L	<10

Electrical

Insulation class	III
Forward voltage (V)	3
LED current (mA)	900
Power supply	Remote excluded
Dimmable	Yes
Power supply type	Non Dimmable, Dimmable Casambi, Dimmable 0-10V, Dimmable DALI 2, Dimmable Push

Ecodesign and Energy Labelling

This product contains a light source of energy efficiency class G



Accessories & Power Supply

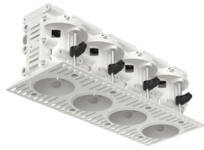


REQUIRED
Power supply

Electrical

60.8534

Continuous current power supply. 230/240V - 50/60Hz. Adjustable Current 350mA - 17W / 500mA - 24W / 550mA - 25W / 700/ 750 mA - 32W switch by trailing and leading edge dimming, mains dimming or push dimming



REQUIRED
Frame

Installation

08.0582.00

Pre-installation frame. 4L - int 43



REQUIRED
Power supply

Electrical

60.9602

'Continuous current power supply of 20W, dimmable DALI 2, 220/240V - 50/60Hz with power current 900 mA



REQUIRED
Power supply

Electrical

60.8911

Non dimmable continuous current power supply of 15-20W, 110/240V - 50/60Hz, with power current selected through adjustable 350 mA-15W /500 mA /550 / 700 / 850 mA / 900 mA - 20W switch



REQUIRED
Power supply

Electrical

60.9162

Continuous current power supply
220/240V - 50/60Hz. Adjustable
Current 300mA-13W / 350mA-
15W / 400mA-18W / 450mA-20W
/ 500mA-22W / 550mA-24W /
600mA-27W / 650mA-29W /
700mA-31W / 750mA-32W /
800mA-33W / 850mA-35W /
900mA-38W / 950mA-40W /
1000/1050mA-4...



REQUIRED
Power supply

Electrical

60.9414

Continuous current power supply
of 20W, dimmable 0-10V,
220/240V - 50/60Hz



REQUIRED
Power supply

Electrical

60.9467

Mains dimming 20W Constant
current power supply, AC phase-
cut adjustable, trailing & leading
edge dimming, 220/240V -
50/60Hz, with dip-switch
programmable power supply
current. Output current: 900mA -
20W / 850mA - 20W / 800mA -
20W / 750mA - 20W / 70...



REQUIRED
Power supply

Electrical

60.9207

Casambi continuous current
power supply, dimmable
220/240V - 50/60Hz, 300mA -
16W / 350mA - 18,5W / 400mA -
21,5W / 450 mA - 24W / 500mA -
27W / 600mA - 32W / 650 mA -
35W / 700 mA - 36W /750 /800
/900 /1000 /1050 /1200 mA -
38W.



REQUIRED
Frame

Installation

08.0580.00

Pre-installation frame. 1L



REQUIRED
Frame

Installation

08.0581.00

Pre-installation frame. 2L - int 43



REQUIRED
Frame

Installation

08.0583.00

Pre-installation frame. 2L - int 70



REQUIRED
Frame

Installation

08.0584.00

Pre-installation frame. 4L - int 70



REQUIRED
Frame

Installation

08.0661.40

Dots Trim Pre-installation frame.
1L



REQUIRED
Frame

Installation

08.0661.14

Dots Trim Pre-installation frame.
1L



OPTIONAL
Frame

Installation

08.0586.00

Accessory Pre-installation frame,
70 mm - 2.76" spacer